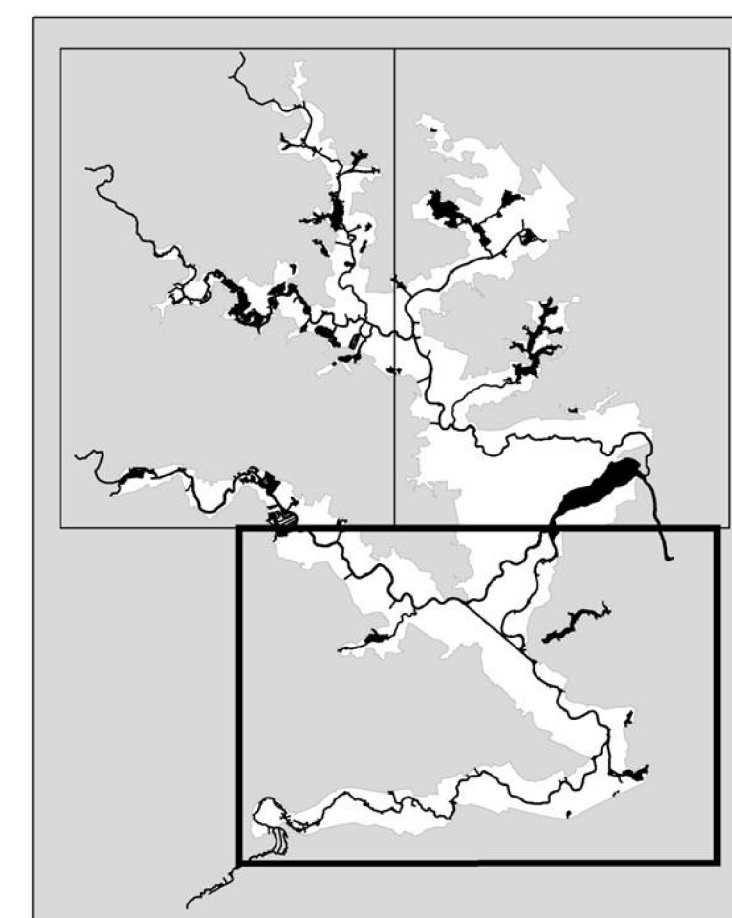


**Broads Local Plan  
Nature Conservation Designations &  
Heritage Assets,  
plus Minerals and Waste Sites**  
South Scale 1:30,000  
July 2017



0 km 1 km  
0.5 km

**Key**

- Listed Mill
- Unlisted Site/Mill
- Listed Building
- Scheduled Ancient Monument
- Registered Parks & Gardens
- Conservation Areas
- Minerals Extraction Sites
- Waste Management Sites
- Key Wastewater Treatment Works
- INTERNATIONAL (Special Areas of Conservation, Special Protection Areas, Ramsars)
- NATIONAL (Special Sites of Scientific Interest, National Nature Reserves)
- LOCAL (County Wildlife Sites, Local Nature Reserves)



© Crown copyright land database (2017) [OS 10001572]. You are granted a non-exclusive, royalty free, revocable licence to view the Licensed Data for non-commercial purposes for the period during which the Licensor makes it available. You are not permitted to copy, sub-license, re-publish, sell or otherwise exploit the Licensed Data to third parties in any form. Third party rights to enforce the terms of this licence shall be reserved by OS. Historic England 2017. Natural England 2017. Contains Ordnance Survey data. The Historic England GIS Data contained in this material was obtained on 23/06/2017. The most recently available up-to-date Historic England GIS Data can be obtained from www.historicengland.org.uk. © Norfolk County Council. © Suffolk Broads Local Plan Services.

