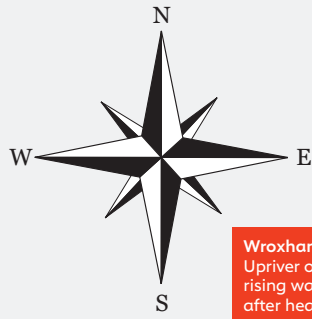


# Boating Map

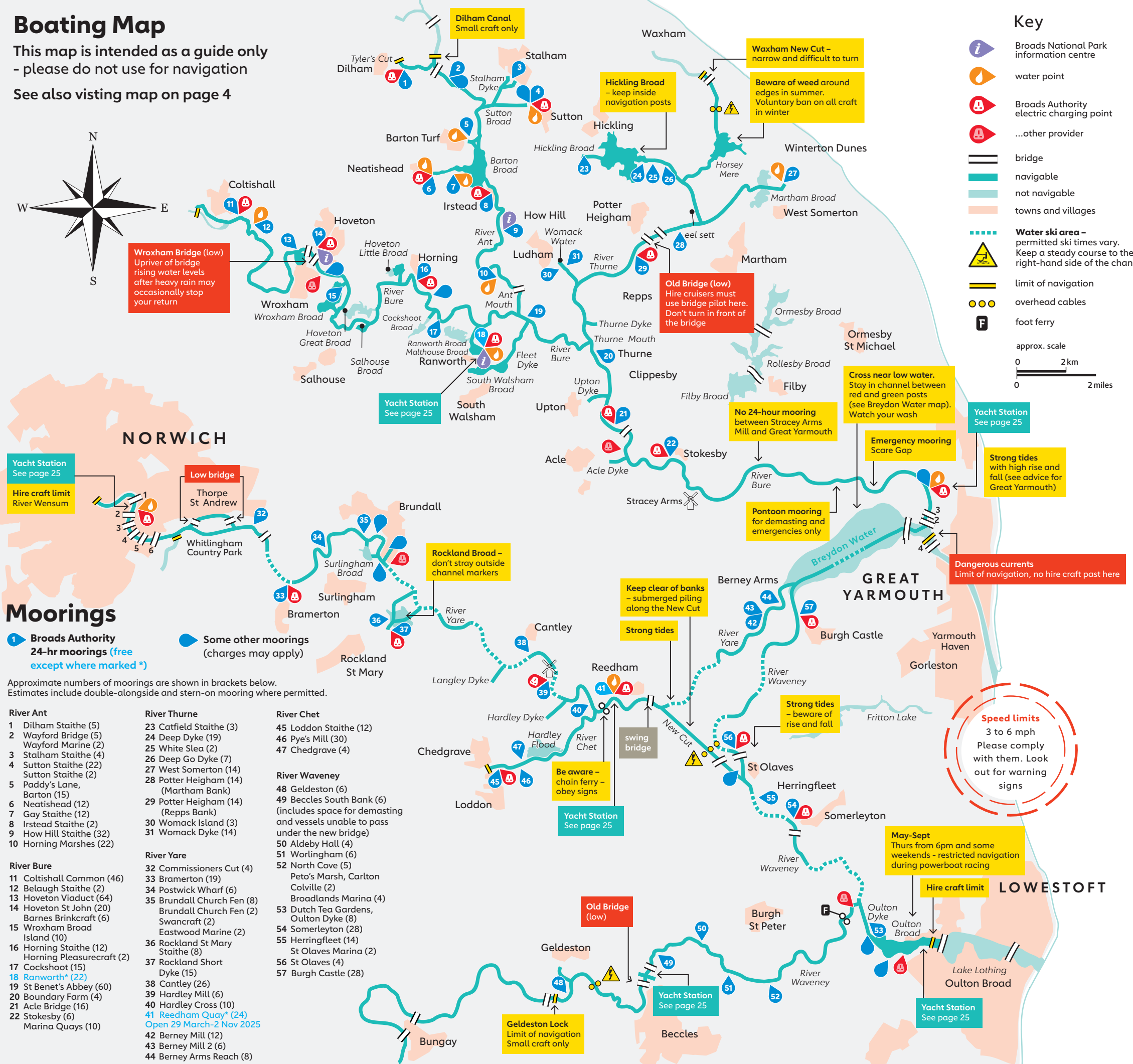
This map is intended as a guide only  
- please do not use for navigation

See also visiting map on page 4



## Key

- Broads National Park information centre
- water point
- Broads Authority electric charging point
- ...other provider
- bridge
- navigable
- not navigable
- towns and villages
- Water ski area** - permitted ski times vary. Keep a steady course to the right-hand side of the channel.
- limit of navigation
- overhead cables
- foot ferry
- approx. scale
- 0 2 km
- 0 2 miles



## Moorings

- Broads Authority 24-hr moorings (free except where marked \*)**
- Some other moorings (charges may apply)**

Approximate numbers of moorings are shown in brackets below. Estimates include double-alongside and stern-on mooring where permitted.

- |  |   |  |
|--|---|--|
| <p><b>River Ant</b></p> <ul style="list-style-type: none"> <li>1 Dilham Staithe (5)</li> <li>2 Wayford Bridge (5)</li> <li>3 Wayford Marine (2)</li> <li>4 Stalham Staithe (4)</li> <li>5 Sutton Staithe (22)</li> <li>6 Paddy's Lane, Barton (15)</li> <li>7 Neatishead (12)</li> <li>8 Gay Staithe (12)</li> <li>9 Irstead Staithe (2)</li> <li>10 Horning Marshes (22)</li> </ul> <p><b>River Bure</b></p> <ul style="list-style-type: none"> <li>11 Coltishall Common (46)</li> <li>12 Belaugh Staithe (2)</li> <li>13 Hoveton Viaduct (64)</li> <li>14 Hoveton St John (20)</li> <li>15 Barnes Brinkcraft (6)</li> <li>16 Wroxham Broad Island (10)</li> <li>17 Horning Staithe (12)</li> <li>18 Horning Pleasurecraft (2)</li> <li>19 Cockshoot (15)</li> <li>20 Ranworth* (22)</li> <li>21 St Benet's Abbey (60)</li> <li>22 Boundary Farm (4)</li> <li>23 Acle Bridge (16)</li> <li>24 Stokesby (6)</li> <li>25 Marina Quays (10)</li> </ul> | <p><b>River Thurne</b></p> <ul style="list-style-type: none"> <li>23 Catfield Staithe (3)</li> <li>24 Deep Dyke (19)</li> <li>25 White Slea (2)</li> <li>26 Deep Go Dyke (7)</li> <li>27 West Somerton (14)</li> <li>28 Potter Heigham (14)</li> <li>29 Potter Heigham (14)</li> <li>30 Martham Bank (Repps Bank)</li> <li>31 Womack Island (3)</li> <li>32 Womack Dyke (14)</li> </ul> <p><b>River Yare</b></p> <ul style="list-style-type: none"> <li>32 Commissioners Cut (4)</li> <li>33 Bramerton (19)</li> <li>34 Postwick Wharf (6)</li> <li>35 Brundall Church Fen (8)</li> <li>36 Brundall Church Fen (2)</li> <li>37 Eastwood Marine (2)</li> <li>38 Rockland St Mary Staithe (8)</li> <li>39 Rockland Short Dyke (15)</li> <li>40 Cantley (26)</li> <li>41 St Benet's Abbey (60)</li> <li>42 Hardley Mill (6)</li> <li>43 Hardley Cross (10)</li> <li>44 Reedham Quay* (24)</li> <li>45 Open 29 March-2 Nov 2025</li> <li>46 Berney Mill (12)</li> <li>47 Berney Mill 2 (6)</li> <li>48 Berney Arms Reach (8)</li> </ul> | <p><b>River Chet</b></p> <ul style="list-style-type: none"> <li>45 Loddon Staithe (12)</li> <li>46 Pye's Mill (30)</li> <li>47 Chedgrave (4)</li> </ul> <p><b>River Waveney</b></p> <ul style="list-style-type: none"> <li>48 Geldeston (6)</li> <li>49 Beccles South Bank (6)</li> <li>50 (includes space for demasting and vessels unable to pass under the new bridge)</li> <li>51 Aldeby Hall (4)</li> <li>52 Worlingham (6)</li> <li>53 North Cove (5)</li> <li>54 Peto's Marsh, Carlton Colville (2)</li> <li>55 Broadlands Marina (4)</li> <li>56 Dutch Tea Gardens, Oulton Dyke (8)</li> <li>57 Somerleyton (28)</li> <li>58 Herringfleet (14)</li> <li>59 St Olaves Marina (2)</li> <li>60 St Olaves (4)</li> <li>61 Burgh Castle (28)</li> </ul> |
|--|---|--|

**Speed limits**  
3 to 6 mph  
Please comply with them. Look out for warning signs

**May-Sept**  
Thurs from 6pm and some weekends - restricted navigation during powerboat racing

**Hire craft limit**