

We'd like to help you have a great visit to the Broads

# Broads Puzzleland

Designed by Ruth Murray

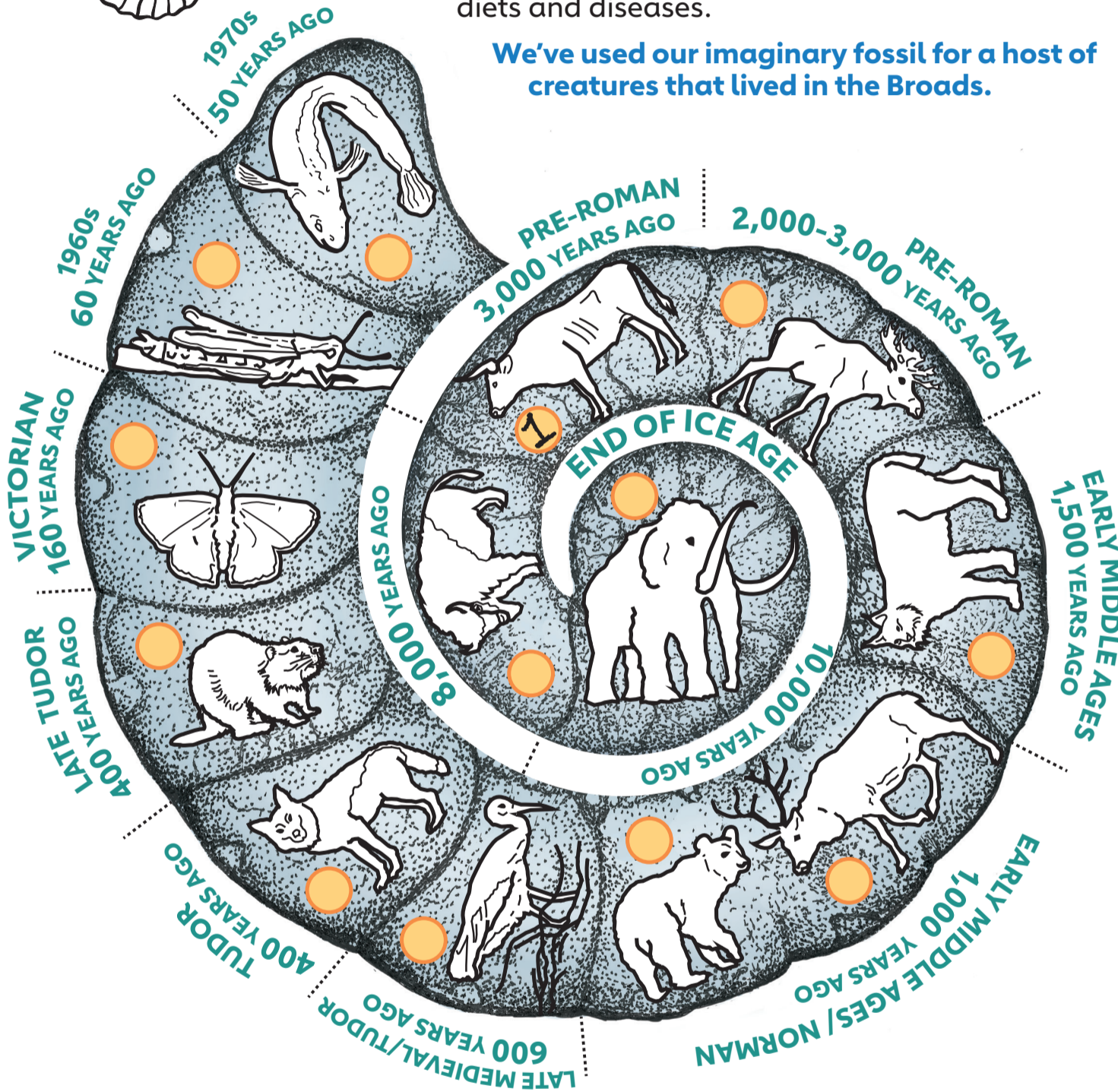
## What is this?



A fossil! It makes an interesting pattern too!

Fossils are physical evidence of prehistoric animals and plants. They can tell us about the history of our planet, about climate and evolution, about diets and diseases.

We've used our imaginary fossil for a host of creatures that lived in the Broads.



## Fossil Puzzle

Match the animal pictures and names (below) with the historical periods when they last lived in the Broads, before becoming extinct.

The first one has been done for you.

- 1 aurochs.....3,000
- 2 lynx.....
- 3 mammoth.....
- 4 bison.....
- 5 beaver.....
- 6 bear.....
- 7 elk.....
- 8 reindeer.....
- 9 stork.....
- 10 wolf.....
- 11 burbot.....
- 12 large marsh grasshopper.....
- 13 large copper butterfly.....

large copper butterfly: 160  
large marsh grasshopper: 60

burbot: 50

wolf: 400

stork: 600

reindeer: 1,000

elk: 2,000-3,000

bear: 1,000

beaver: 400

bison: 8,000

mammoth: 10,000

lynx: 1,500

## Fossil puzzle answers:

## A quarter of the UK's rarest wildlife is found in the Broads



Norfolk hawker dragonfly

Climate change, conservation management work and improved water clarity are among the many things that affect Broads wildlife. Some species have been reintroduced, such as the large marsh grasshopper, natterjack toad, fen raft spider and grass-wrack pond weed. Some rare species have also spread, becoming very slightly less rare, such as the Norfolk hawker dragonfly.



Visit [TheBroads.co.uk](http://TheBroads.co.uk) [broads-authority.gov.uk](http://broads-authority.gov.uk)

Remember, Competent Crew always wear life jackets for getting on and off or mooring their boat. Competent Crew never get into the water.

Competent Crew always plan ahead, listen to instructions when they arrive, follow advice and go slowly while they're boating.

