



To the Chair, Vice chair and Members of the Broads Authority

CC: Chair, Vice Chair and Members of the Broads Authority Navigation Committee; Broads Stakeholder MP's; Broads Authority Chief Executive.

3rd May 2024

Formal Question for the Broads Authority meeting on 10th May 2024 ref. 'Briefing on the Lower Bure – riverbed levels, dredging depths and posts'

For information, our membership now stands at 1,451.

On the email we sent you on 15th April this year, we advised we would be submitting a public question for the Authority meeting on 10th May, regarding the BA chart for the lower Bure. We have deliberately delayed that submission until today as we anticipated significant information would be forthcoming very close to the deadline. That has proved to be a sound policy.

We are profoundly disappointed that our expectations were correct and the receipt of such a complex briefing just 24 hours before the deadline has not allowed sufficient time for a full appraisal of, and response to it.

We have, however, carried out a preliminary appraisal and reject it in its entirety. Without being able to present detail at this stage, a summary of our reasons are as follows:

- The terminology used for depths and data is inconsistent and impossible to interpret
- The statements about the red posts are at best questionable and at worst unbelievable
- There are statements which conflict with others both in the briefing and elsewhere. For instance on your website, in responses to FOI requests, in meeting minutes, previous BA statements, newsletters and IALA standards.
- We have received additional intelligence from two different sources which confirm the findings in our report.
- Not least, the explanation and reasoning about the Bure Hump in your briefing reinforces our findings.

Additional information to provide the detail will follow.

OUR QUESTION TO THE AUTHORITY IS THEREFORE AS FOLLOWS:

Does the Authority believe the BA Navigation Chart titled 'Ashtree Farm Reach', as attached, is accurate?

I will be reading this question at the meeting.

Be advised this document will be sent to all relevant stakeholders, made public and a press statement issued later today.

Colin Chettleburgh, for and on behalf of the Broads Reform Action Group.

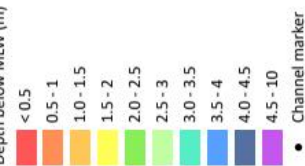
E: chair@broads-reform.org

Ashtree Farm Reach

The information has been published by the Broads Authority in order to meet its duties as a harbour authority under the Port Marine Safety Code and the requirements of the UK Hydrographic Office. River Bure last surveyed 2023.



Depth below MLW (m)



© Crown copyright [and database rights] 2022 OS 100021573. You are permitted to use this data solely to enable you to respond to, or interact with, the organisation that provided you with the data. You are not permitted to copy, sub-license, distribute or sell any of this data to third parties in any form.

