

Broads Authority

24 January 2025

Agenda item number 19

Whitlingham Charitable Trust – Annual Report

Report by Chief Executive

Purpose

This report includes in Appendix 1 a copy of the Trust’s Annual Report for the Board’s information.

Broads Plan context

Theme F: Connecting and inspiring local communities

Recommended decision

To note the contents of the Annual Report of the Whitlingham Charitable Trust.

1. Introduction

- 1.1. The Chief Executive represented the Authority at the Annual Meeting of the Whitlingham Charitable Trust on Wednesday 11 December 2024. The Authority and the Trustees of the Arminghall Settlement are the Members of the Trust who appoint trustees. The Authority appointed four trustees in July 2023 following an open recruitment process.

2. Annual Report

- 2.1. The Trust’s Annual Report was presented to the AGM and a copy is attached in Appendix 1 for information. The Trust is in a strong financial position.

3. Trustees

- 3.1. One of the Trustees appointed by the Broads Authority has decided to resign. The suggestion from the Senior Governance Officer is that this position should remain vacant until the new round of recruitment in 2026. This is on the basis that the Articles of Association specify that the Authority “may appoint not more than four persons” measured against the work involved in any recruitment. In addition, postponing the appointment would provide for the term of office of all appointees to be aligned.

Author: John Packman

Date of report: 18 December 2024

Appendix 1 – Whitlingham Charitable Trust Annual Report.



Whitlingham Country Park

2024 ANNUAL REPORT



Winner 2024



New volunteer welfare facilities were installed at the workshop compound.

The portacabin was purchased from Wymondham Tennis Club and fitted out by our skilled volunteer tradesmen.



This year we launched our education resources – we have reached out to over 200 schools and youth groups within 45 minute journey of the park.



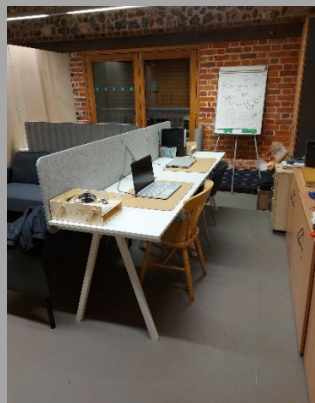
Students from Trowse Primary School, Key Stage 2, joined us to plant 30 Norfolk varieties of apple tree. The project was funded by Sinclair tree fund through South Norfolk District Council.



The park has provided volunteering opportunities to young people for personal development and to achieve the Duke of Edinburgh Bronze award.

We continue to work with Easton and City College to provide land based work experience for students and this year we welcomed our first supported interns. New challenges but huge rewards, our team are very proud of the work and progress the students made.





Following a refit of the Flint Barn Cafe and the Country Park reaching some significant milestones it was the perfect time to celebrate the work of our volunteers and an opportunity to thank our funders. The evening was attended by the Lord Lieutenant of Norfolk Lady Dannatt, Council representatives and supporters of our work.



The wet summer followed by one of the wettest winters on record resulted in flooding and erosion across the park and paths.

Root ingress to the drainage pipes reduced the ability to drain the Great Broad effectively. Major works were undertaken to repair and replace the damaged pipes and reinforce the banks.

The frequency of flood events is increasing and long term solutions to maintain year round access is being investigated.





Funding from Birds on the Brink enabled us to install a tern raft on the Great Broad. A Common Tern was seen perched on the edge of the raft but there has been no breeding at the park this season.

The Conservation Volunteers donated 1000 mixed native hedging plants, creating a natural barrier to the archery area from Whitlingham Lane.



New trails and guided walks with a British Sign Language interpreter have opened the park to new audiences.





Volunteers from Aviva helped us to carry out plant surveys across the parks meadows. Our ambition is to make this an annual event.

Hay raking is hot work but this year for the first time we were able to cut and clear 2ha of the picnic meadow.

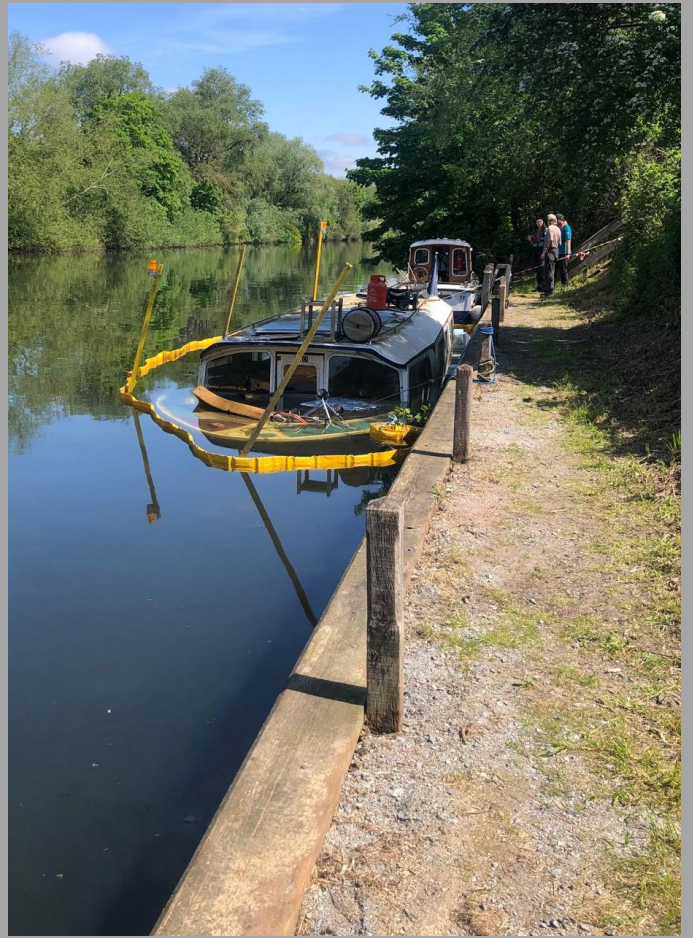




Whitlingham Country Park have given a home to the Equal Brewkery to enable them to continue their excellent work with adults and young people with learning disabilities. With support from Aviva our storage container has been converted into a modern nano teaching brewery. Beers brewed in the park will be stocked in the Flint Barn Cafe and East of England Co Ops.

Whitlingham Visitor Moorings were refurbished and reopened to the public in time for the summer holiday season. The moorings have the potential to be an excellent alternative route to the park.





One of the challenges of managing a visitor mooring is the live-aboard community and the risk of abandoned vessels. Sunken vessels are time consuming and costly to resolve.

The team are hugely grateful for the continued support they receive from Alex Begg and Glenn Anderson at Wendling Beck and the endless energy of Gemma Walker and Denzil Dean from the Norfolk Wildlife Trust.

How do you feel about your local green spaces?

Get involved
Norfolk Wildlife Trust have teamed up with Whitlingham Country Park and Norfolk & Waveney Mind to run three events where we want to hear all about how you experience nature and outdoor spaces.

This could be local parks, your favourite spot by the river, a bench with a view; anything! Even if you feel like you don't connect to nature at all we'd love to hear your thoughts!

Friday 11 October
6:30pm to 8pm
Old Lakenham Community Centre
NR1 2NG

Saturday 19 October
2:30pm to 4pm
Harford Community Centre
NR4 6ET

Tuesday 29 October
1pm to 2:30pm
Tuckswold Library
NR4 6BX

Free tea and cake
All welcome.
Each event will be around 1.5 hours long.
They will be relaxed and sociable.

No need to book, just turn up!

NORFOLK WILDLIFE TRUST
Whitlingham Country Park
Mind Norfolk and Waveney

We've been out in the community with our friends at the Norfolk Wildlife Trust, listening to our visitors, learning what makes a green space special and why Whitlingham is so important.

We've had an amazing response to the visitor survey and connected with minority groups from across Norwich.

Whitlingham hosted the first Urban Green Space Managers Meeting attended by the Norwich Fringe Project, NWT, Mousehold Heath and Broadland Country Park. An opportunity to share knowledge and experience.





We spent the most joyous evening with the young people of the Norwich International Youth Project. A celebration of life and the great outdoors.

Key Events 2024

Dementia walk
Snellings AGM corporate Event
Green Flag assessment
Big C wellness guided walk
Installation of the donation point in the Flint Barn Café.
Open farm Sunday
Hearing loop installed at café counter
Norwich Triathlon
Refugee walks with New Routes
Guided walks
BSL guided walks
Open Water Swim event
Education equipment trialled by Home Education group
Outdoor cinema weekend festival
Green Flag Award
Yoga festival
Outdoor Theatre-Beowulf-Quill & Inkling Theatre company
Teddy bears picnic family event
Outdoor theatre-The Lost World-Strange Fascination Theatre Company
Heritage Open Days – Hands on with History event
Walk Norfolk festival Launch, Ranger led guided walk with a BSL interpreter
Partnership with NWT - visitor survey events and door knocking to invite people to attend focus groups.
First school groups in to use Education equipment – The system and resources were well received.
Solar planning permission granted.
Halloween family event
Open Air Halloween Cinema