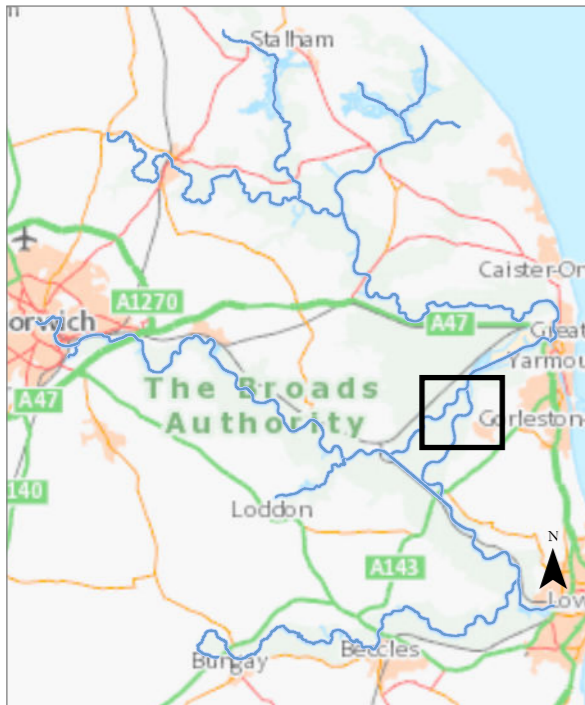


Turntide Jetty to Caldecott drainage Mill (Burgh Castle Reach)

The information has been published by the Broads Authority in order to meet its duties as a harbour authority under the Port Marine Safety Code and the requirements of the UK Hydrographic Office. Last surveyed 2021. Breydon Water 2022.



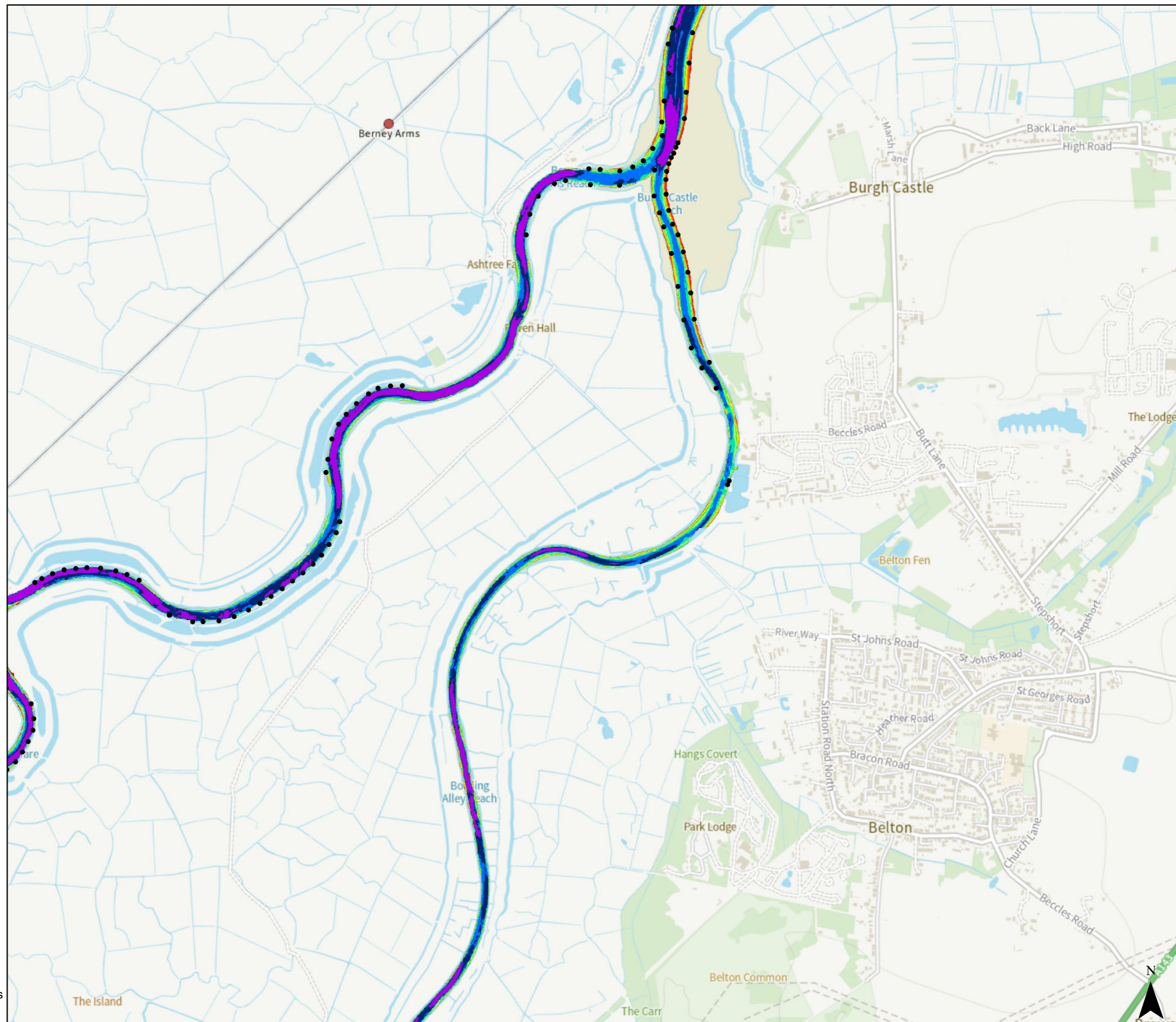
Depth below MLW (m)



• Post

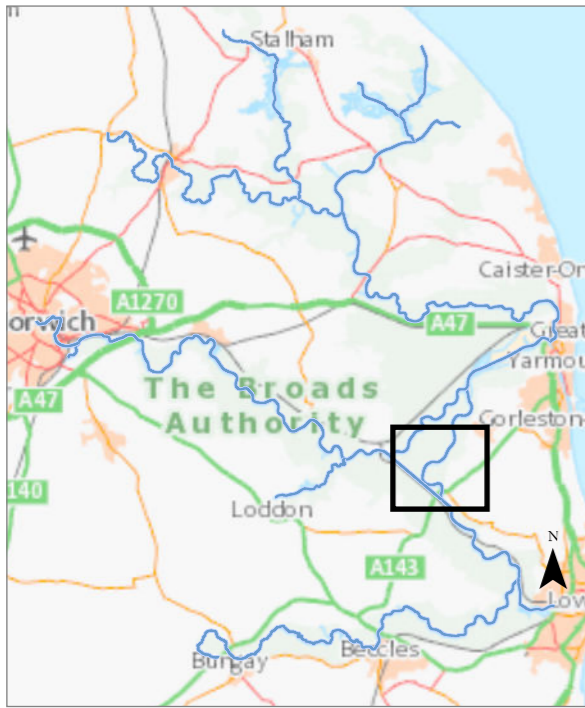
© Crown copyright [and database rights] 2024 OS AC0000814754. You are permitted to use this data solely to enable you to respond to, or interact with, the organisation that provided you with the data. You are not permitted to copy, sub-licence, distribute or sell any of this data to third parties in any form.

0 0.8 Kilometers

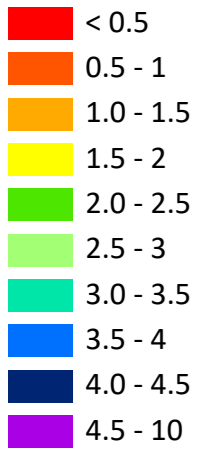


Caldecott Drainage Mill to Haddiscoe Cut (Waveney Forest)

The information has been published by the Broads Authority in order to meet its duties as a harbour authority under the Port Marine Safety Code and the requirements of the UK Hydrographic Office. Surveyed 2021. St Olaves to Haddiscoe surveyed 2022.

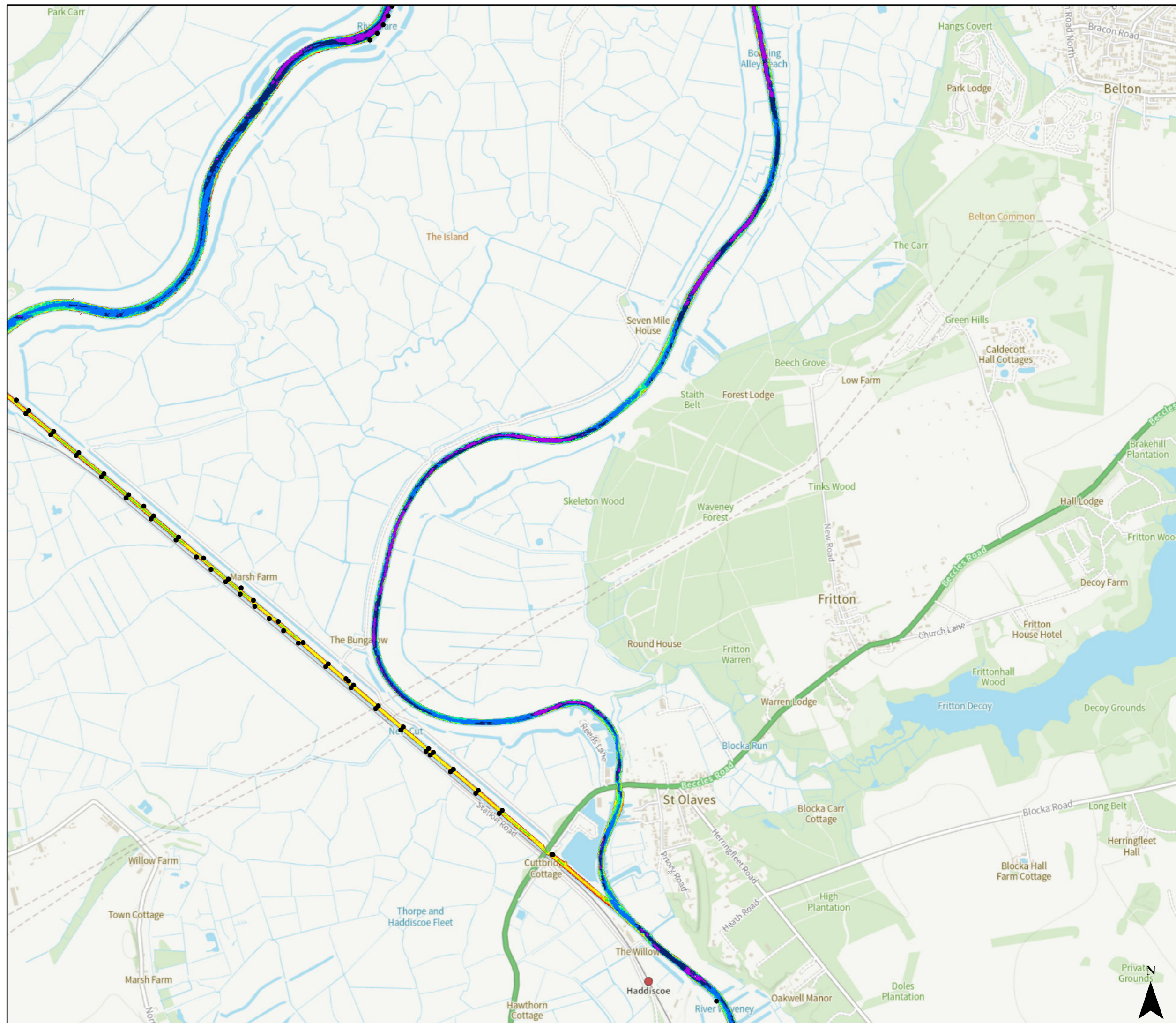


Depth below MLW (m)



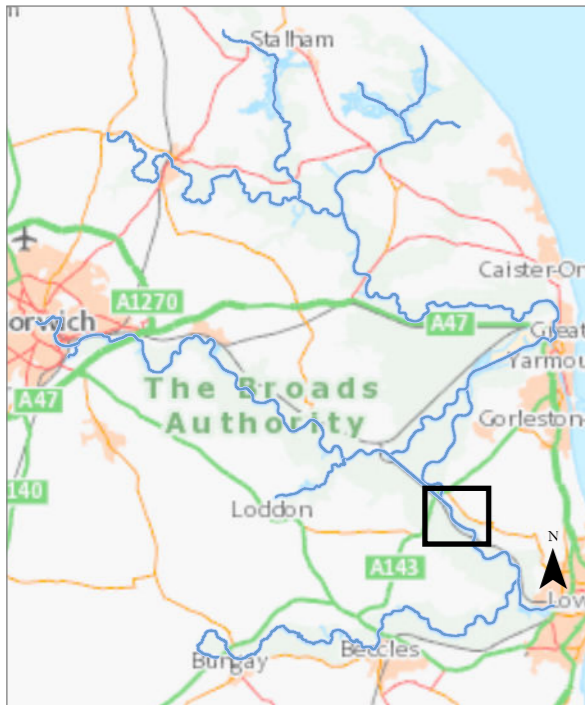
● Post

© Crown copyright [and database rights] 2024 OS AC0000814754. You are permitted to use this data solely to enable you to respond to, or interact with, the organisation that provided you with the data. You are not permitted to copy, sub-licence, distribute or sell any of this data to third parties in any form.



Haddiscoe Cut to Somerleyton Swing Bridge (St Olaves Reach)

The information has been published by the Broads Authority in order to meet its duties as a harbour authority under the Port Marine Safety Code and the requirements of the UK Hydrographic Office. Last surveyed 2021. St Olaves to Haddiscoe surveyed 2022.



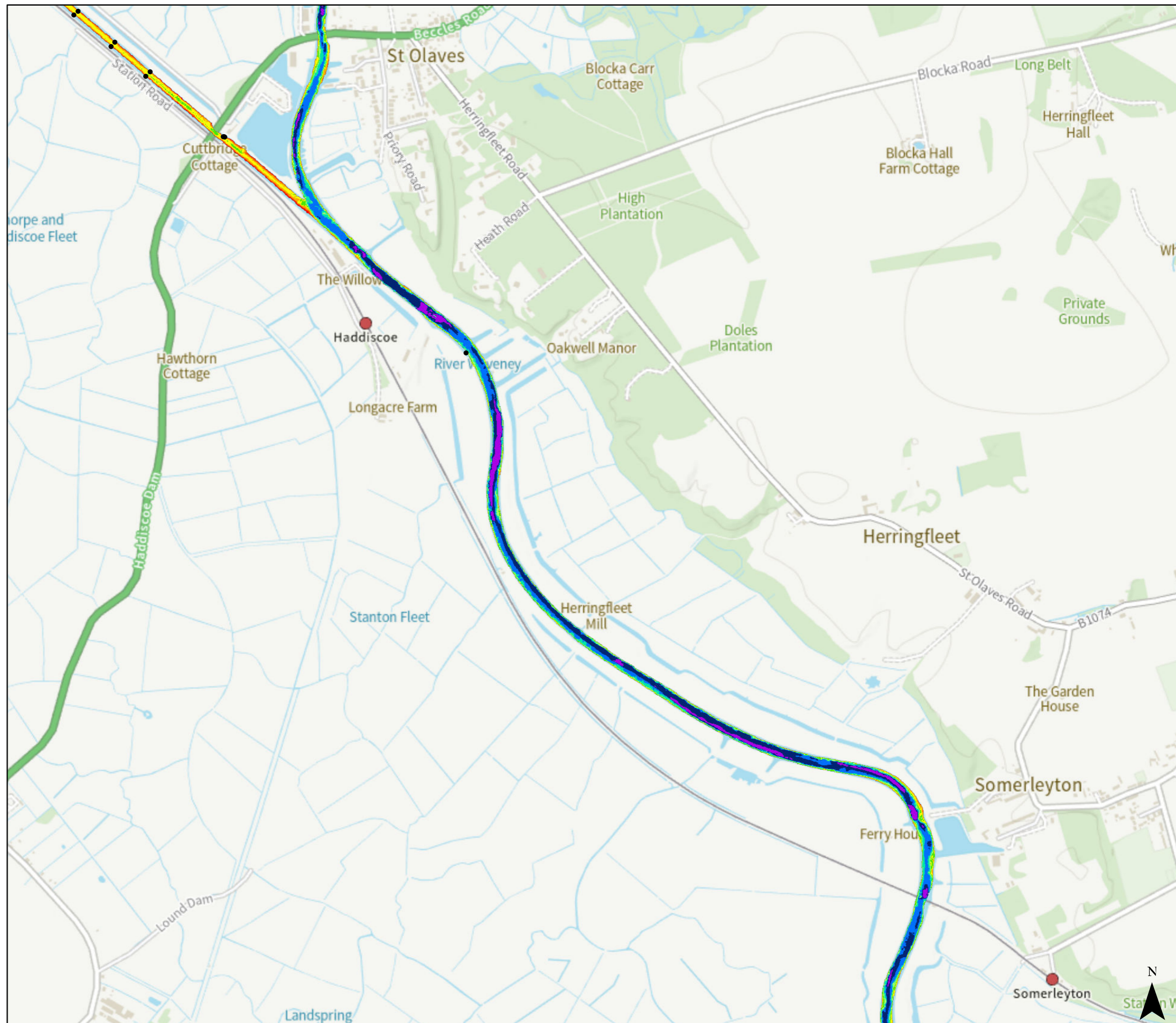
Depth below MLW (m)



• Post

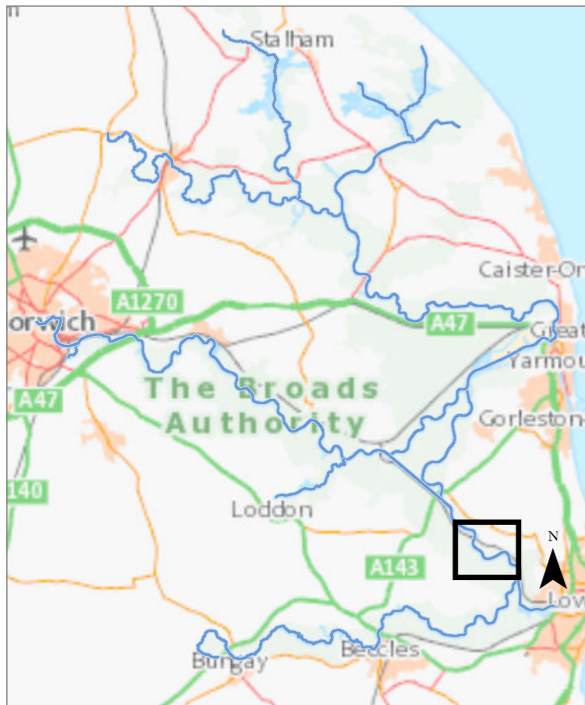
© Crown copyright [and database rights] 2024 OS AC0000814754. You are permitted to use this data solely to enable you to respond to, or interact with, the organisation that provided you with the data. You are not permitted to copy, sub-licence, distribute or sell any of this data to third parties in any form.

0 0.6 Kilometers

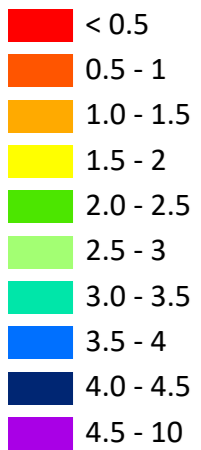


Somerleyton Swing Bridge to Oulton Dyke (Somerleyton Reach)

The information has been published by the Broads Authority in order to meet its duties as a harbour authority under the Port Marine Safety Code and the requirements of the UK Hydrographic Office. Last surveyed 2021.

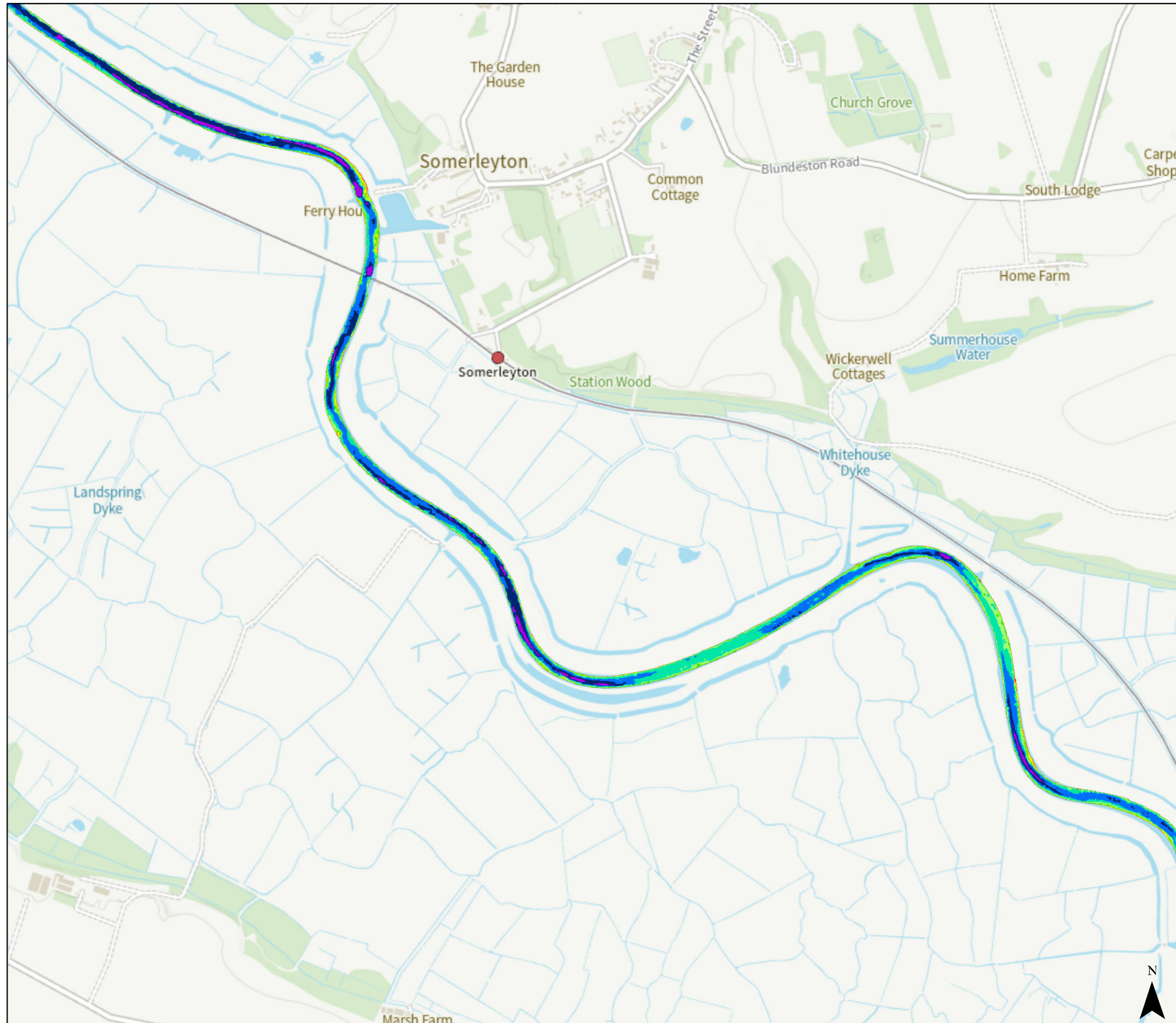


Depth below MLW (m)



© Crown copyright [and database rights] 2024 OS AC0000814754. You are permitted to use this data solely to enable you to respond to, or interact with, the organisation that provided you with the data. You are not permitted to copy, sub-licence, distribute or sell any of this data to third parties in any form.

0 0.6 Kilometers



Oulton Dyke to Oulton Broad (Oulton Dyke and Oulton Broad)

The information has been published by the Broads Authority in order to meet its duties as a harbour authority under the Port Marine Safety Code and the requirements of the UK Hydrographic Office. River Waveney last surveyed 2021. Oulton Dyke surveyed 2020 & 2022. Oulton Broad surveyed 2024.



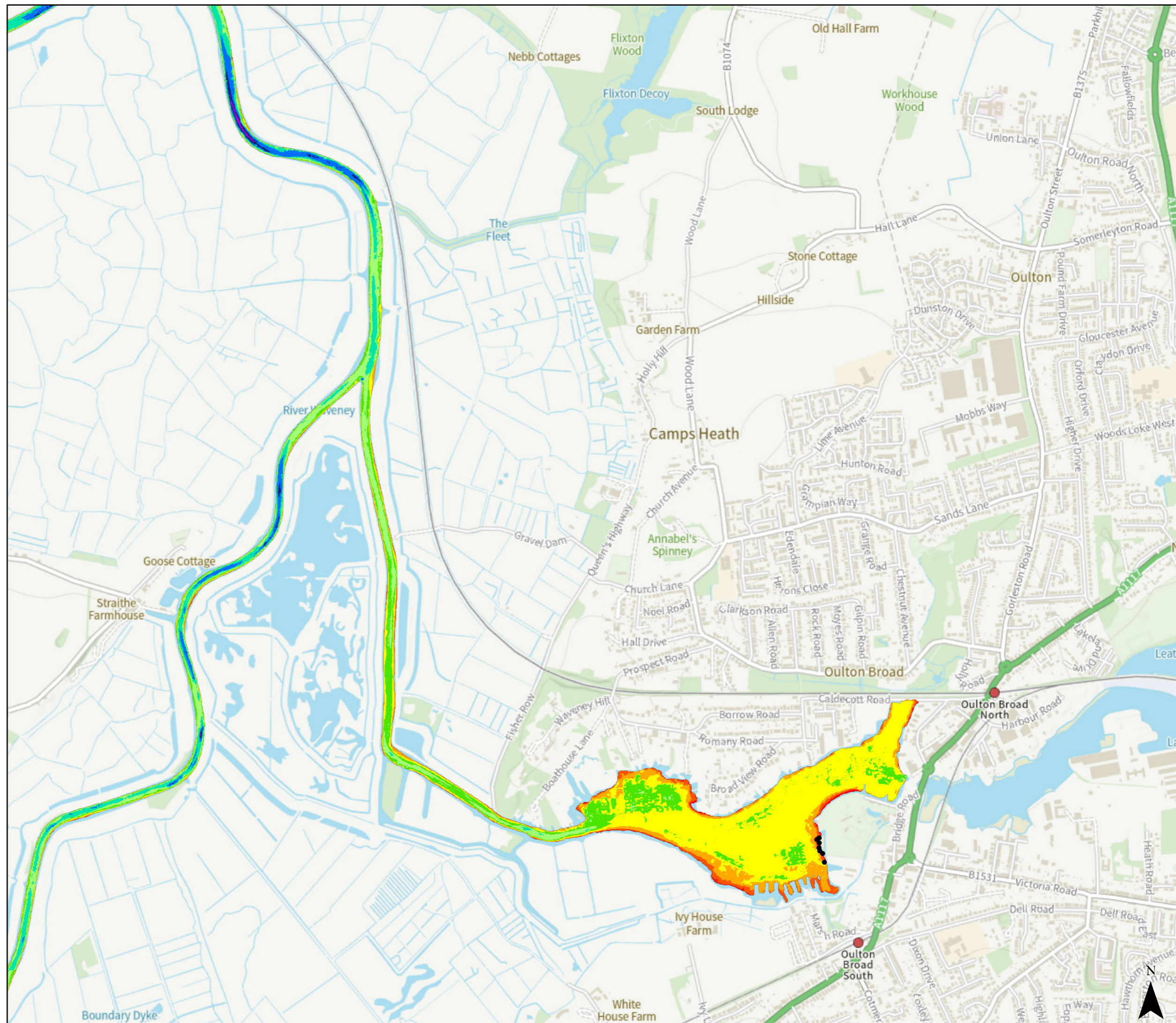
Depth below MLW (m)

- < 0.5
- 0.5 - 1
- 1.0 - 1.5
- 1.5 - 2
- 2.0 - 2.5
- 2.5 - 3
- 3.0 - 3.5
- 4.0 - 4.5
- 4.5 - 10

• Post

© Crown copyright [and database rights] 2024 OS AC0000814754. You are permitted to use this data solely to enable you to respond to, or interact with, the organisation that provided you with the data. You are not permitted to copy, sub-licence, distribute or sell any of this data to third parties in any form.

0 0.8 Kilometers



Oulton Dyke to Castle Marsh (Burgh St Peter Reach)

The information has been published by the Broads Authority in order to meet its duties as a harbour authority under the Port Marine Safety Code and the requirements of the UK Hydrographic Office. Surveyed 2021.

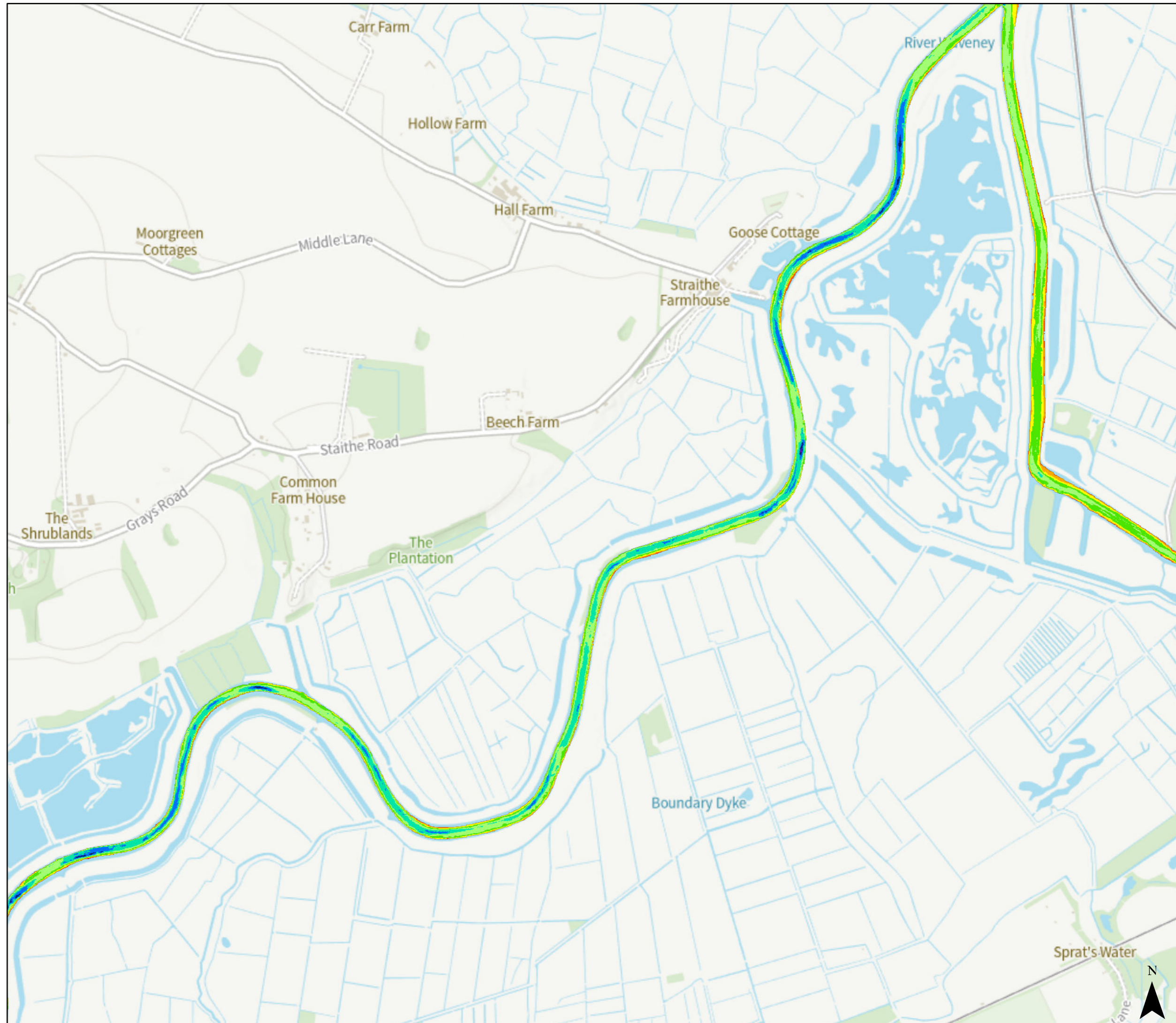


Depth below MLW (m)

- < 0.5
- 0.5 - 1
- 1.0 - 1.5
- 1.5 - 2
- 2.0 - 2.5
- 2.5 - 3
- 3.0 - 3.5
- 3.5 - 4
- 4.0 - 4.5
- 4.5 - 10

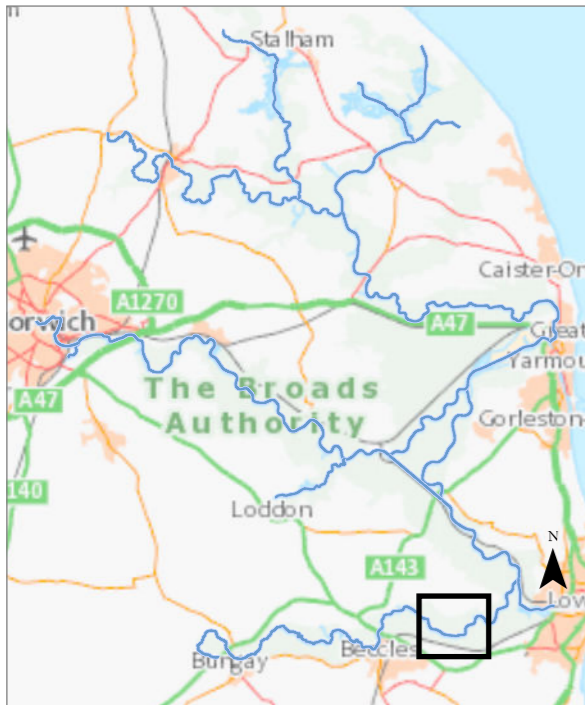
© Crown copyright [and database rights] 2024 OS AC0000814754. You are permitted to use this data solely to enable you to respond to, or interact with, the organisation that provided you with the data. You are not permitted to copy, sub-licence, distribute or sell any of this data to third parties in any form.

0 0.6 Kilometers



Castle Marsh to Aldeby Hall (Worlingham Reach)

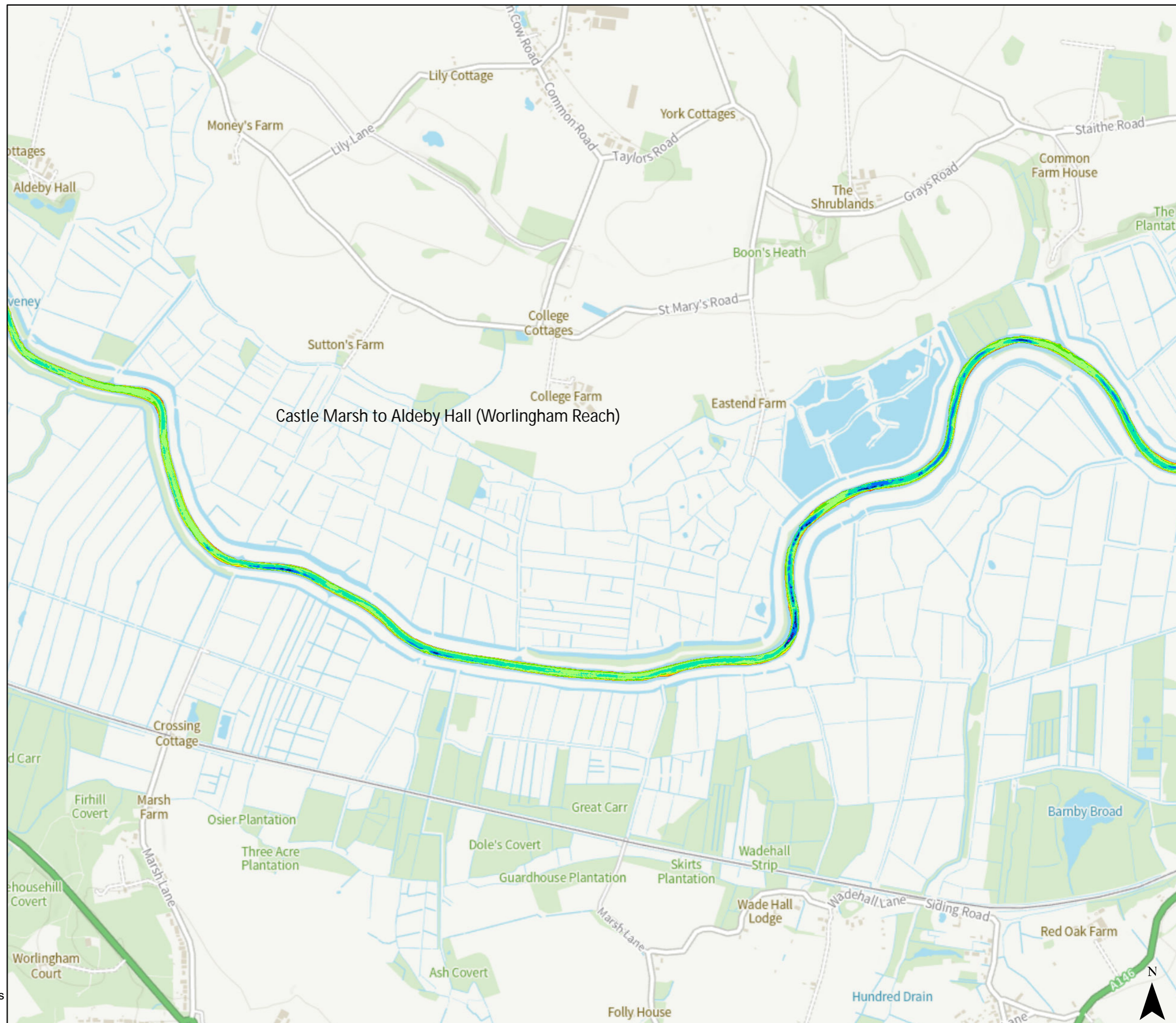
The information has been published by the Broads Authority in order to meet its duties as a harbour authority under the Port Marine Safety Code and the requirements of the UK Hydrographic Office. Last surveyed 2021.



Depth below MLW (m)

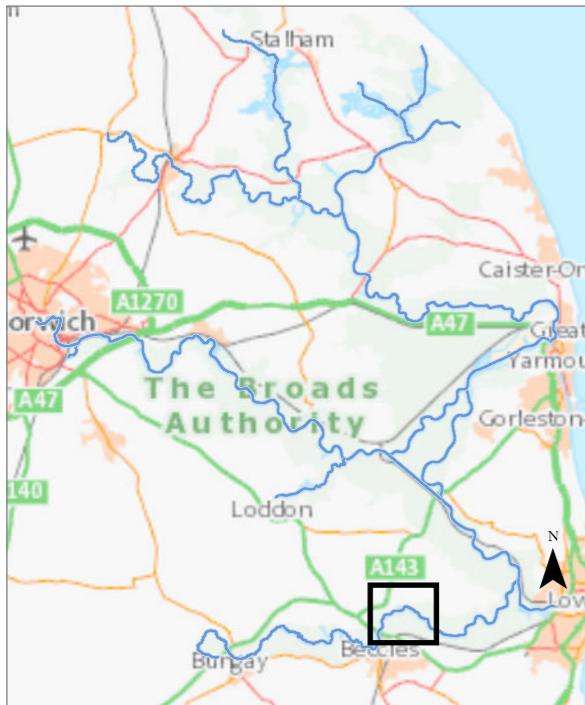


© Crown copyright [and database rights] 2024 OS AC0000814754. You are permitted to use this data solely to enable you to respond to, or interact with, the organisation that provided you with the data. You are not permitted to copy, sub-licence, distribute or sell any of this data to third parties in any form.



Aldeby Hall to Beccles (Aldeby Reach)

The information has been published by the Broads Authority in order to meet its duties as a harbour authority under the Port Marine Safety Code and the requirements of the UK Hydrographic Office. Surveyed in 2020 upstream of Stanley Carrs. Downstream of Stanley Carrs surveyed 2021.



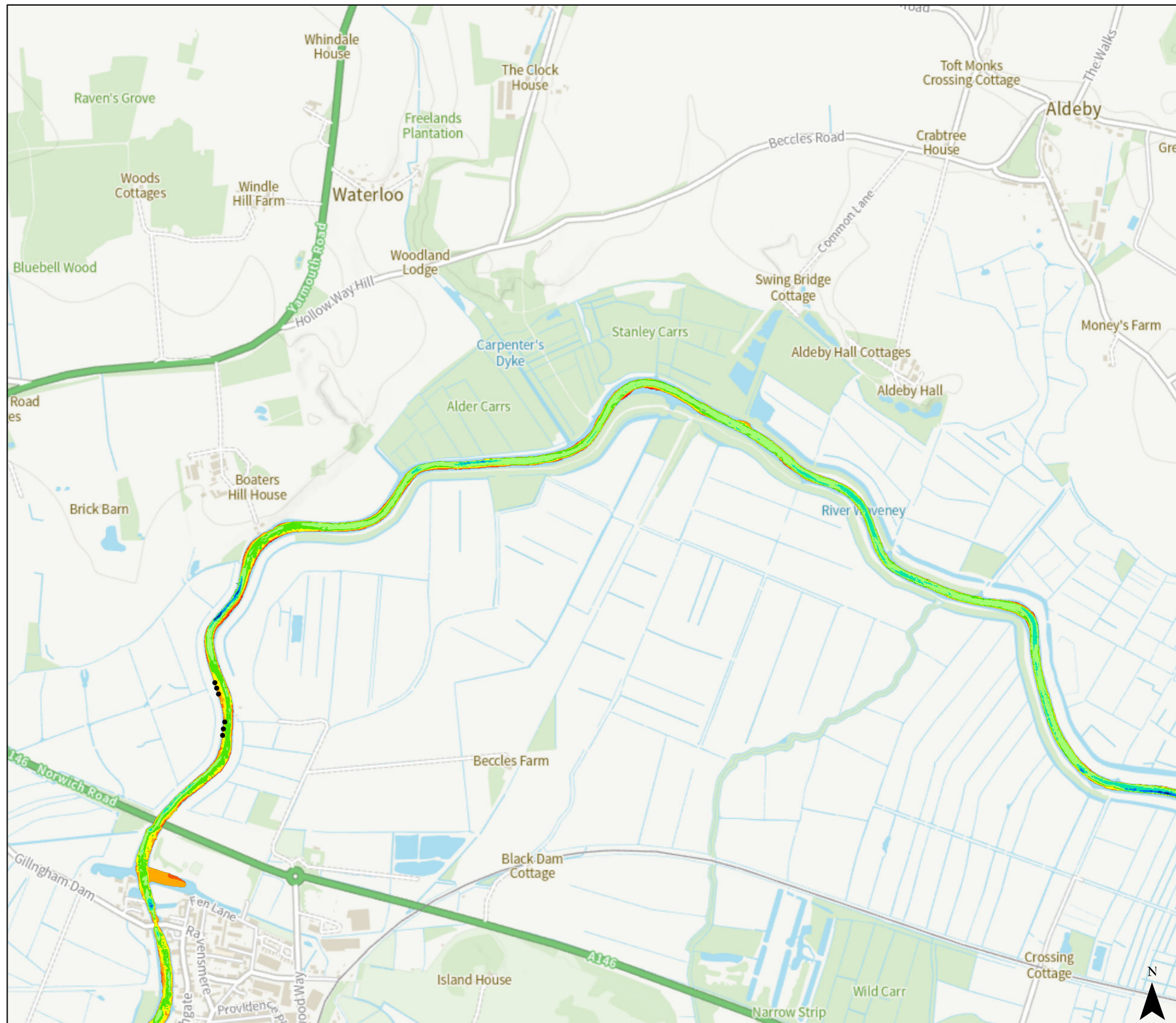
Depth below MLW (m)



• Post

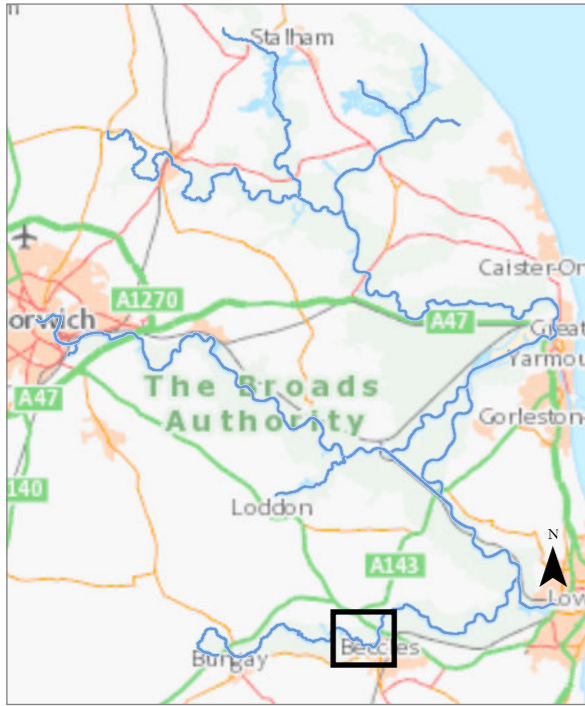
© Crown copyright [and database rights] 2024 OS AC0000814754. You are permitted to use this data solely to enable you to respond to, or interact with, the organisation that provided you with the data. You are not permitted to copy, sub-licence, distribute or sell any of this data to third parties in any form.

0 0.7 Kilometers



Beccles to Dunburgh (Beccles Reach)

The information has been published by the Broads Authority in order to meet its duties as a harbour authority under the Port Marine Safety Code and the requirements of the UK Hydrographic Office. Upstream of Beccles Bridge surveyed in 2020. Downstream surveyed in 2022.



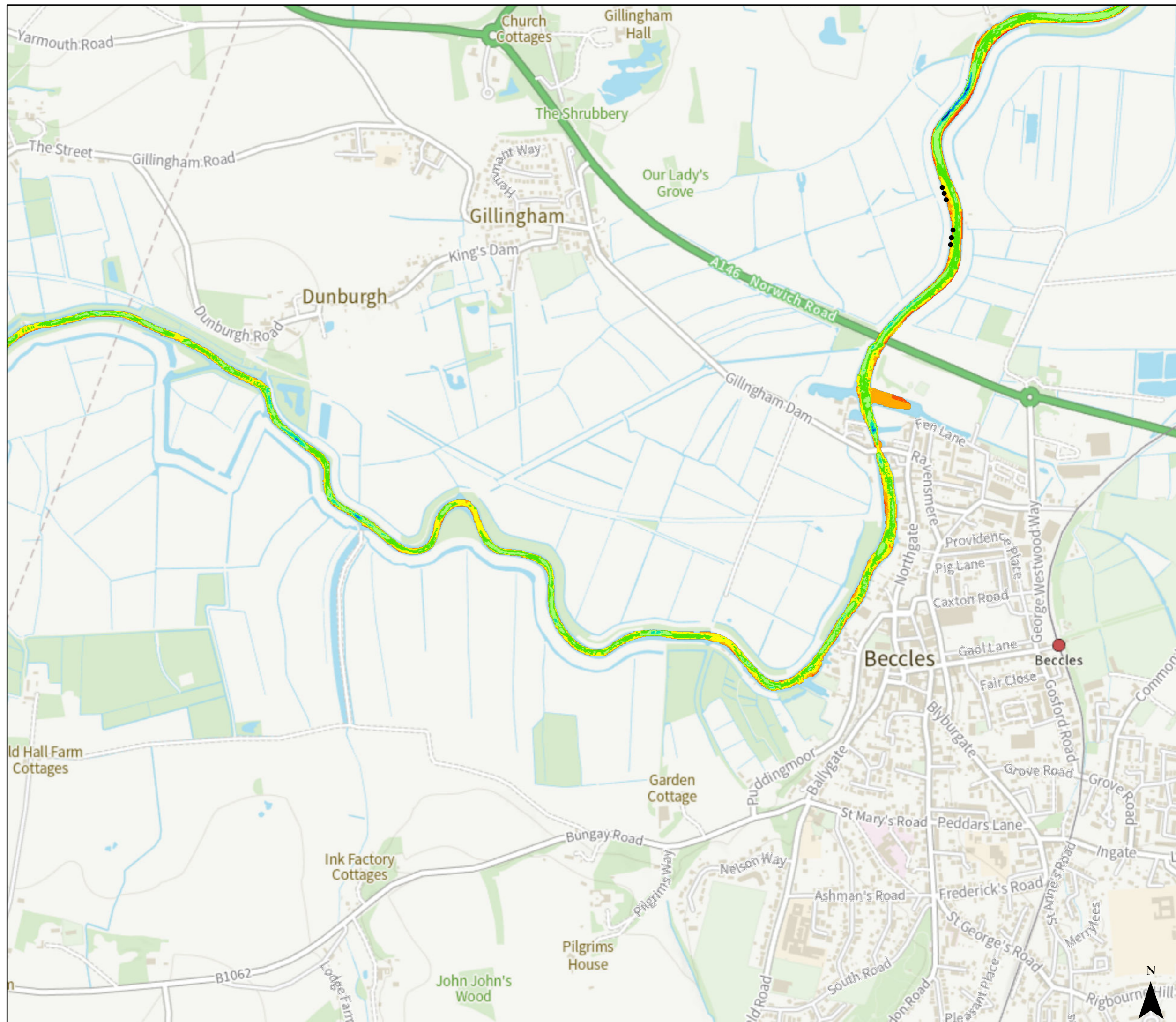
Depth below MLW (m)



● Post

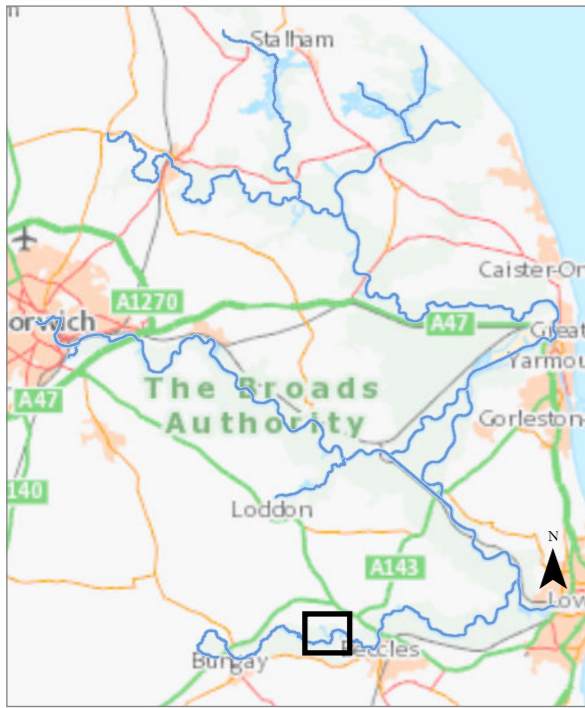
© Crown copyright [and database rights] 2024 OS AC0000814754. You are permitted to use this data solely to enable you to respond to, or interact with, the organisation that provided you with the data. You are not permitted to copy, sub-licence, distribute or sell any of this data to third parties in any form.

0 0.6 Kilometers



Dunburgh to Geldeston (Geldeston Reach)

The information has been published by the Broads Authority in order to meet its duties as a harbour authority under the Port Marine Safety Code and the requirements of the UK Hydrographic Office. Geldeston Dyke last surveyed 2020. River Waveney 2022.



Depth below MLW (m)

- < 0.5
- 0.5 - 1
- 1.0 - 1.5
- 1.5 - 2
- 2.0 - 2.5
- 2.5 - 3
- 3.0 - 3.5
- 3.5 - 4
- 4.0 - 4.5
- 4.5 - 10

© Crown copyright [and database rights] 2024 OS AC0000814754. You are permitted to use this data solely to enable you to respond to, or interact with, the organisation that provided you with the data. You are not permitted to copy, sub-licence, distribute or sell any of this data to third parties in any form.

0 0.5 Kilometers

