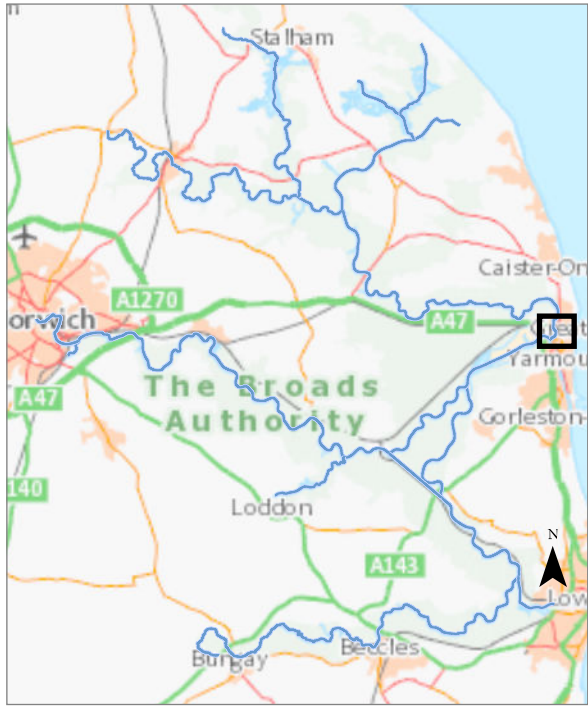


# Bure Mouth to Bure Loop

The information has been published by the Broads Authority in order to meet its duties as a harbour authority under the Port Marine Safety Code and the requirements of the UK Hydrographic Office. River Bure last surveyed 2023. Breydon water 2022.

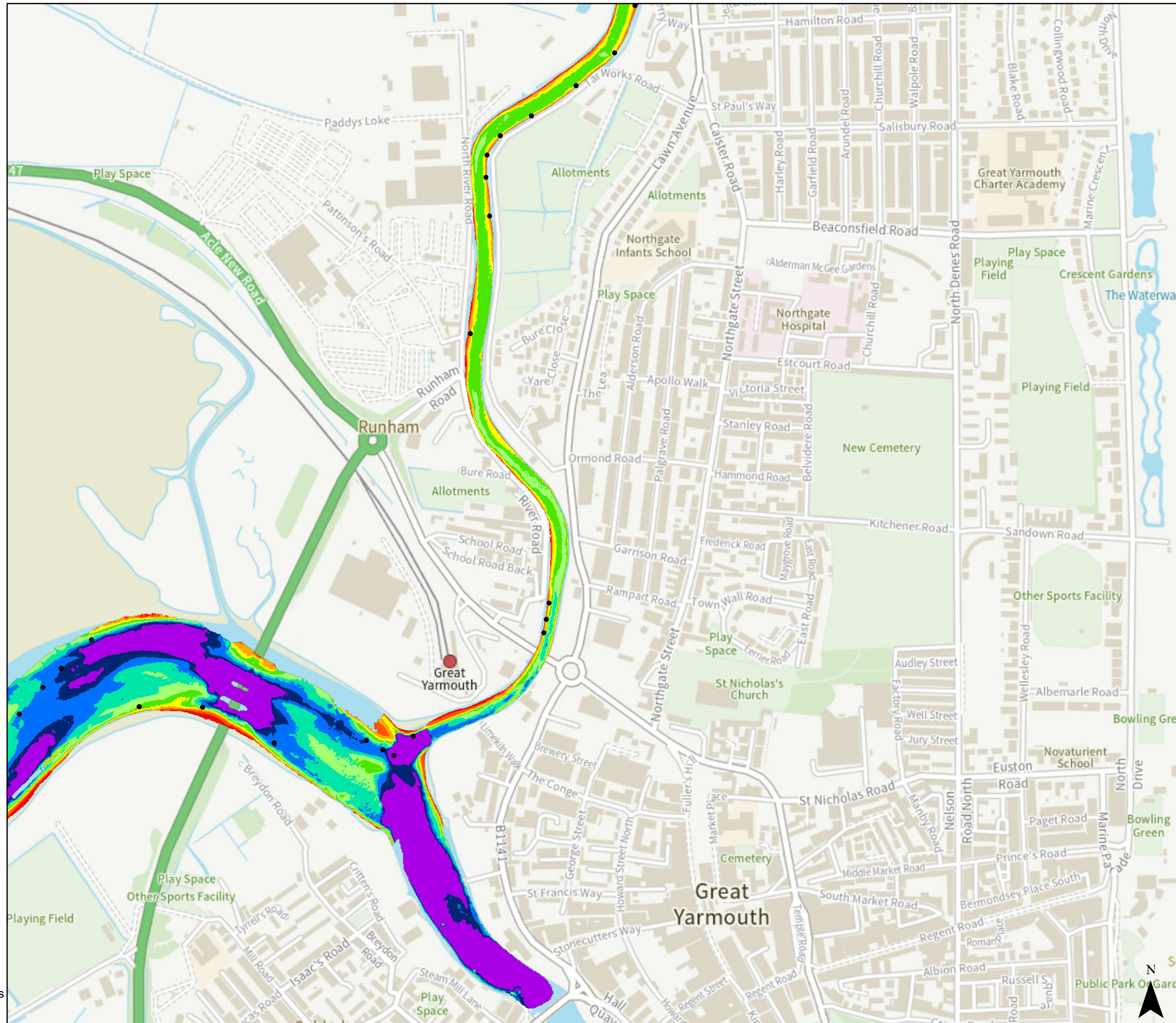


## Depth below MLW (m)

- < 0.5
- 0.5 - 1
- 1.0 - 1.5
- 1.5 - 2
- 2.0 - 2.5
- 2.5 - 3
- 3.0 - 3.5
- 3.5 - 4
- 4.0 - 4.5
- 4.5 - 10

● Post

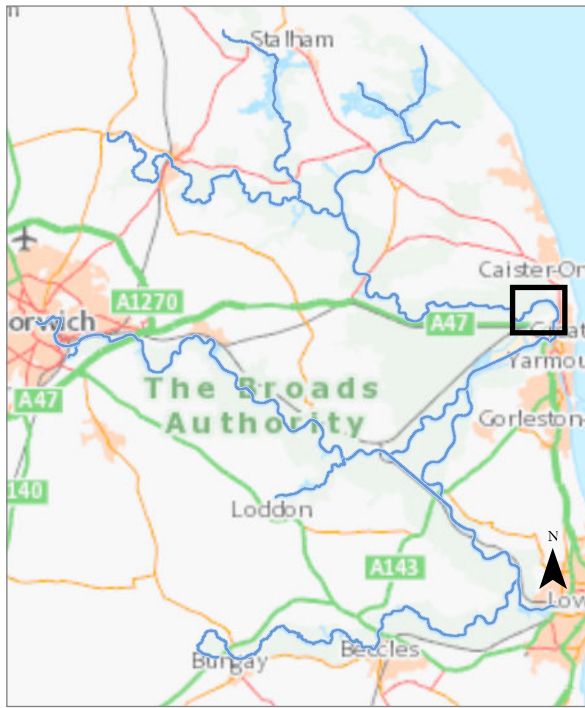
© Crown copyright [and database rights] 2024 OS AC0000814754. You are permitted to use this data solely to enable you to respond to, or interact with, the organisation that provided you with the data. You are not permitted to copy, sub-licence, distribute or sell any of this data to third parties in any form.





## Bure Loop to Scare Gap (Ashtree Farm Reach)

The information has been published by the Broads Authority in order to meet its duties as a harbour authority under the Port Marine Safety Code and the requirements of the UK Hydrographic Office. River Bure last surveyed 2023.

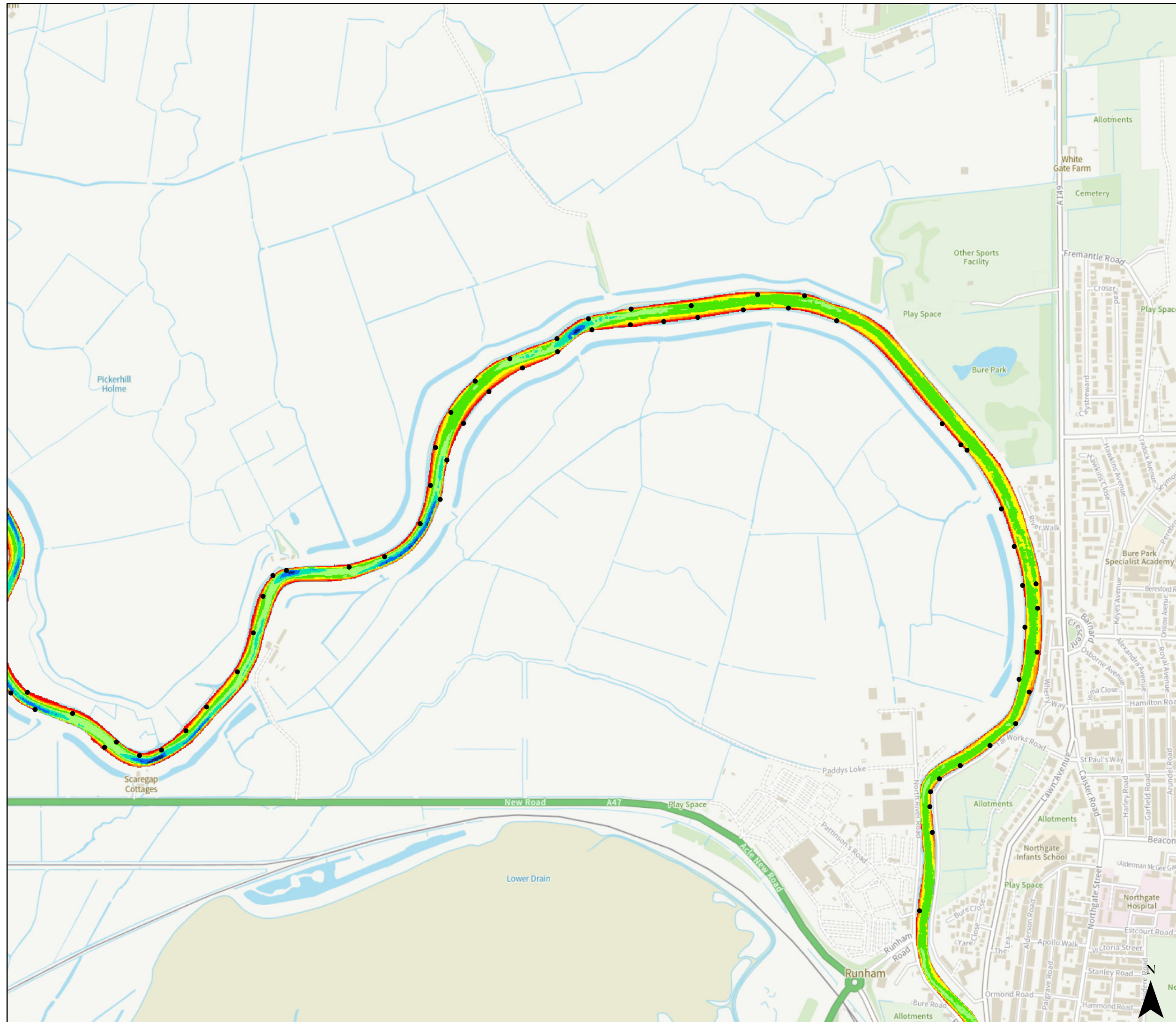


Depth below MLW (m)



• Post

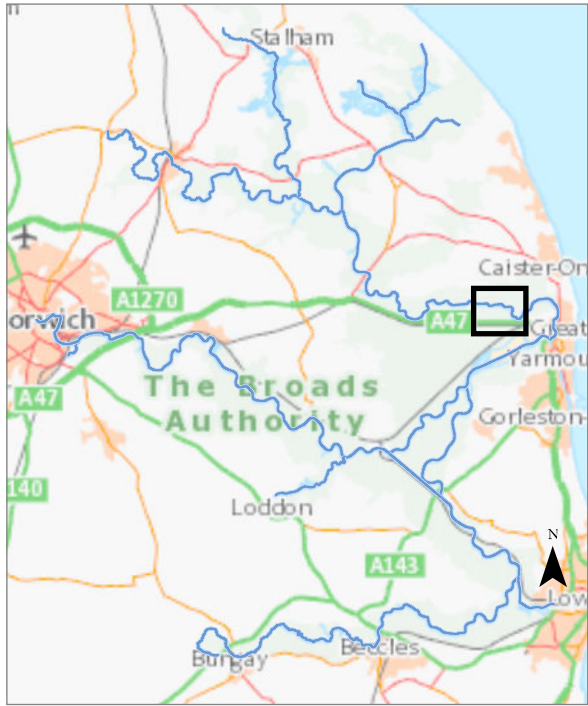
© Crown copyright [and database rights] 2024 OS AC0000814754. You are permitted to use this data solely to enable you to respond to, or interact with, the organisation that provided you with the data. You are not permitted to copy, sub-licence, distribute or sell any of this data to third parties in any form.





# Scare Gap to Five Mile House (Mautby Reach)

The information has been published by the Broads Authority in order to meet its duties as a harbour authority under the Port Marine Safety Code and the requirements of the UK Hydrographic Office. River Bure last surveyed 2023.



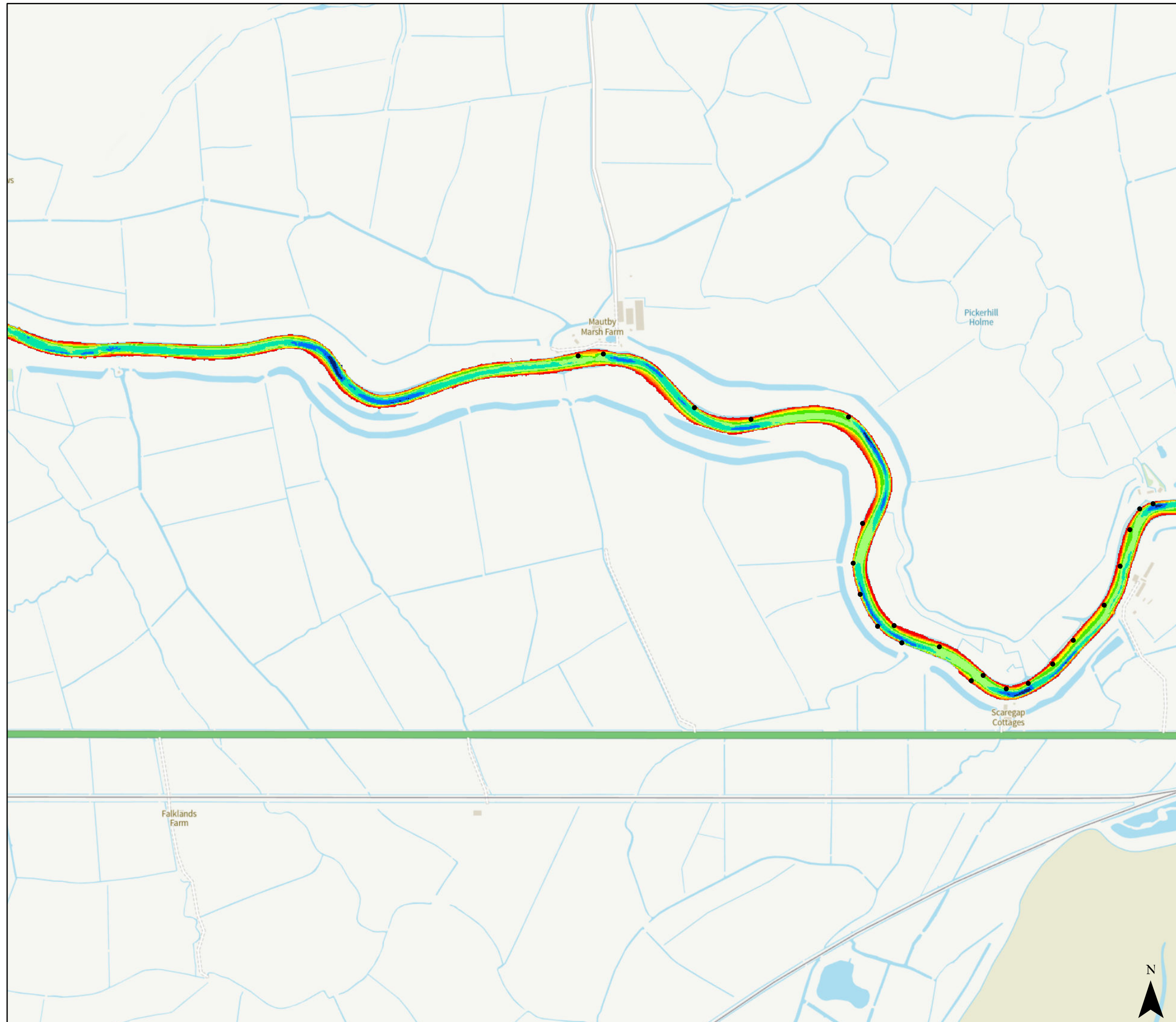
## Depth below MLW (m)

- < 0.5
- 0.5 - 1
- 1.0 - 1.5
- 1.5 - 2
- 2.0 - 2.5
- 2.5 - 3
- 3.0 - 3.5
- 3.5 - 4
- 4.0 - 4.5
- 4.5 - 10

• Post

© Crown copyright [and database rights] 2024 OS AC0000814754. You are permitted to use this data solely to enable you to respond to, or interact with, the organisation that provided you with the data. You are not permitted to copy, sub-licence, distribute or sell any of this data to third parties in any form.

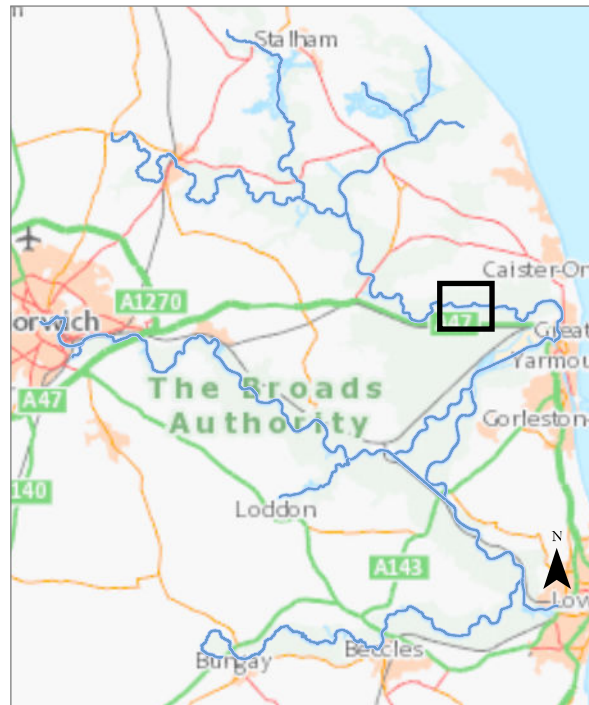
0 0.5 Kilometers



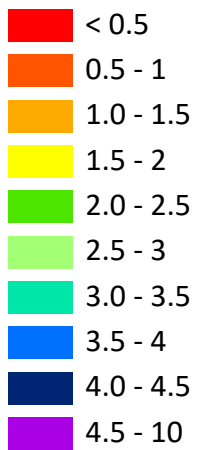


## Five Mile House to Six Mile House (Six Mile House Reach)

The information has been published by the Broads Authority in order to meet its duties as a harbour authority under the Port Marine Safety Code and the requirements of the UK Hydrographic Office. River Bure last surveyed 2023.

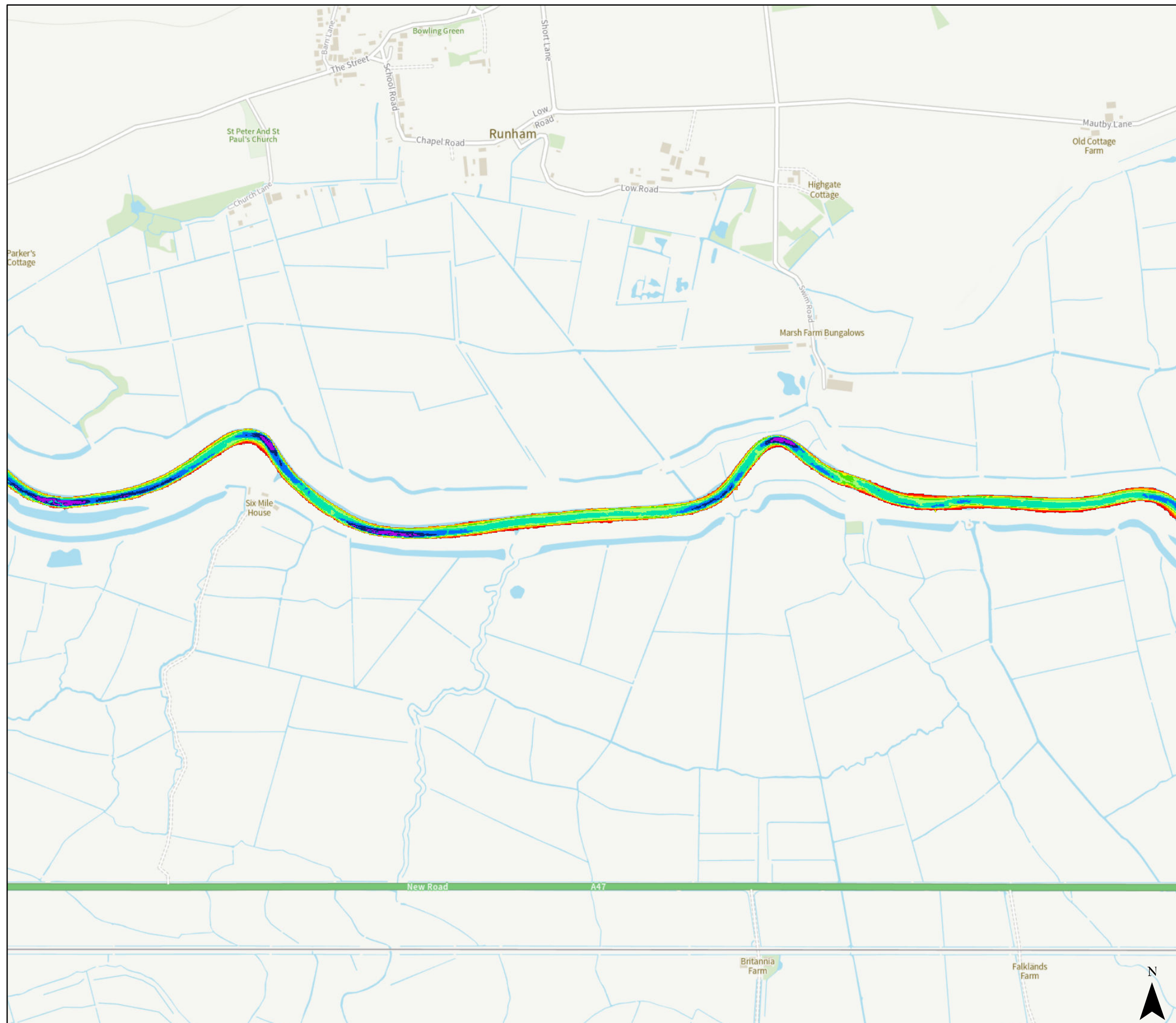


Depth below MLW (m)



© Crown copyright [and database rights] 2024 OS AC0000814754. You are permitted to use this data solely to enable you to respond to, or interact with, the organisation that provided you with the data. You are not permitted to copy, sub-licence, distribute or sell any of this data to third parties in any form.

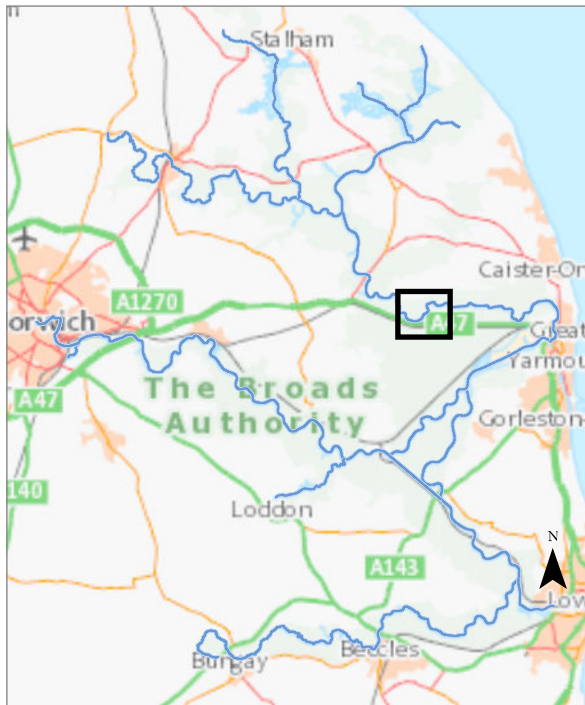
0 0.5 Kilometers



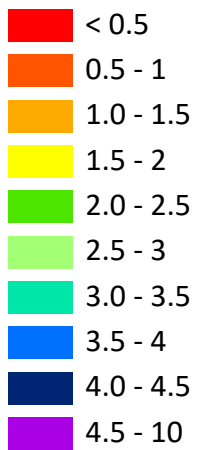


## Six Mile House to Stracey Arms Mill (Stracey Arms Reach)

The information has been published by the Broads Authority in order to meet its duties as a harbour authority under the Port Marine Safety Code and the requirements of the UK Hydrographic Office. River Bure last surveyed 2023.

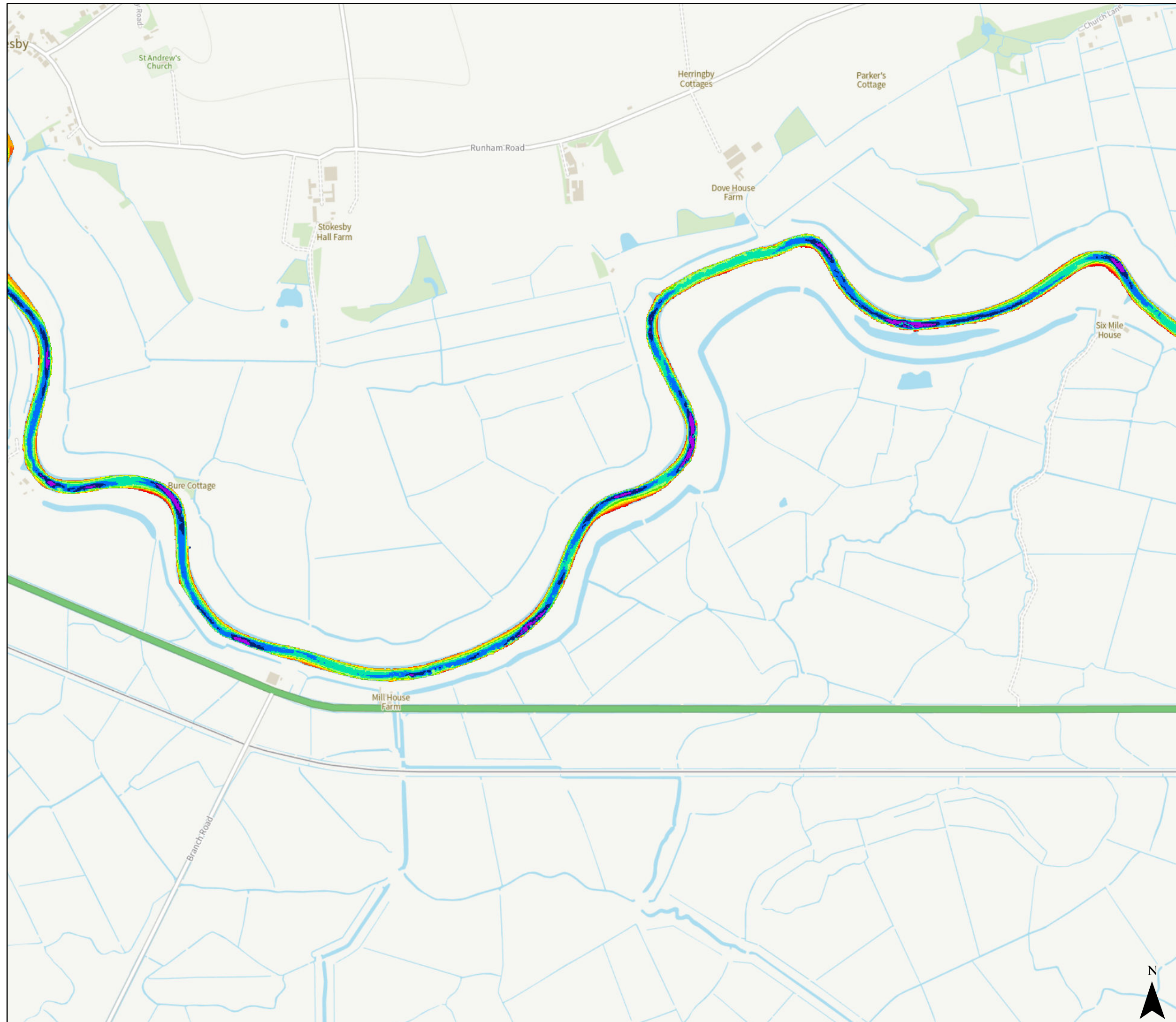


Depth below MLW (m)



© Crown copyright [and database rights] 2024 OS AC0000814754. You are permitted to use this data solely to enable you to respond to, or interact with, the organisation that provided you with the data. You are not permitted to copy, sub-licence, distribute or sell any of this data to third parties in any form.

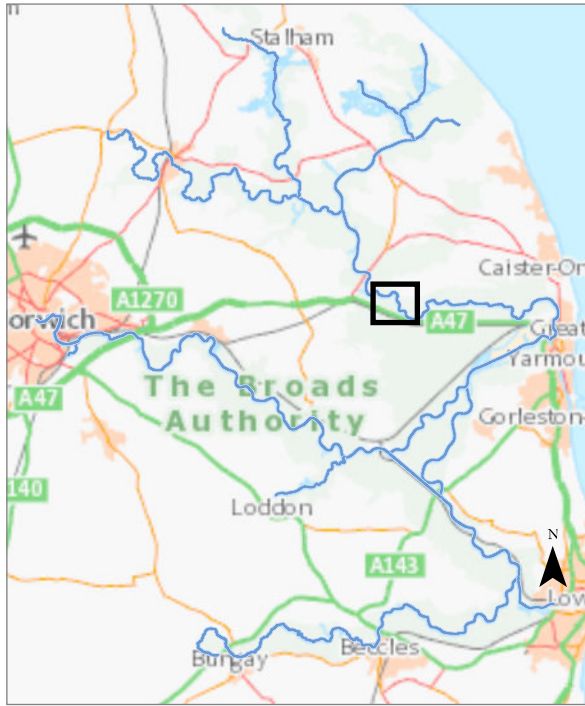
0 0.5 Kilometers





## Stracey Arms to Stokesby (Stokesby Reach)

The information has been published by the Broads Authority in order to meet its duties as a harbour authority under the Port Marine Safety Code and the requirements of the UK Hydrographic Office. River Bure last surveyed 2023.



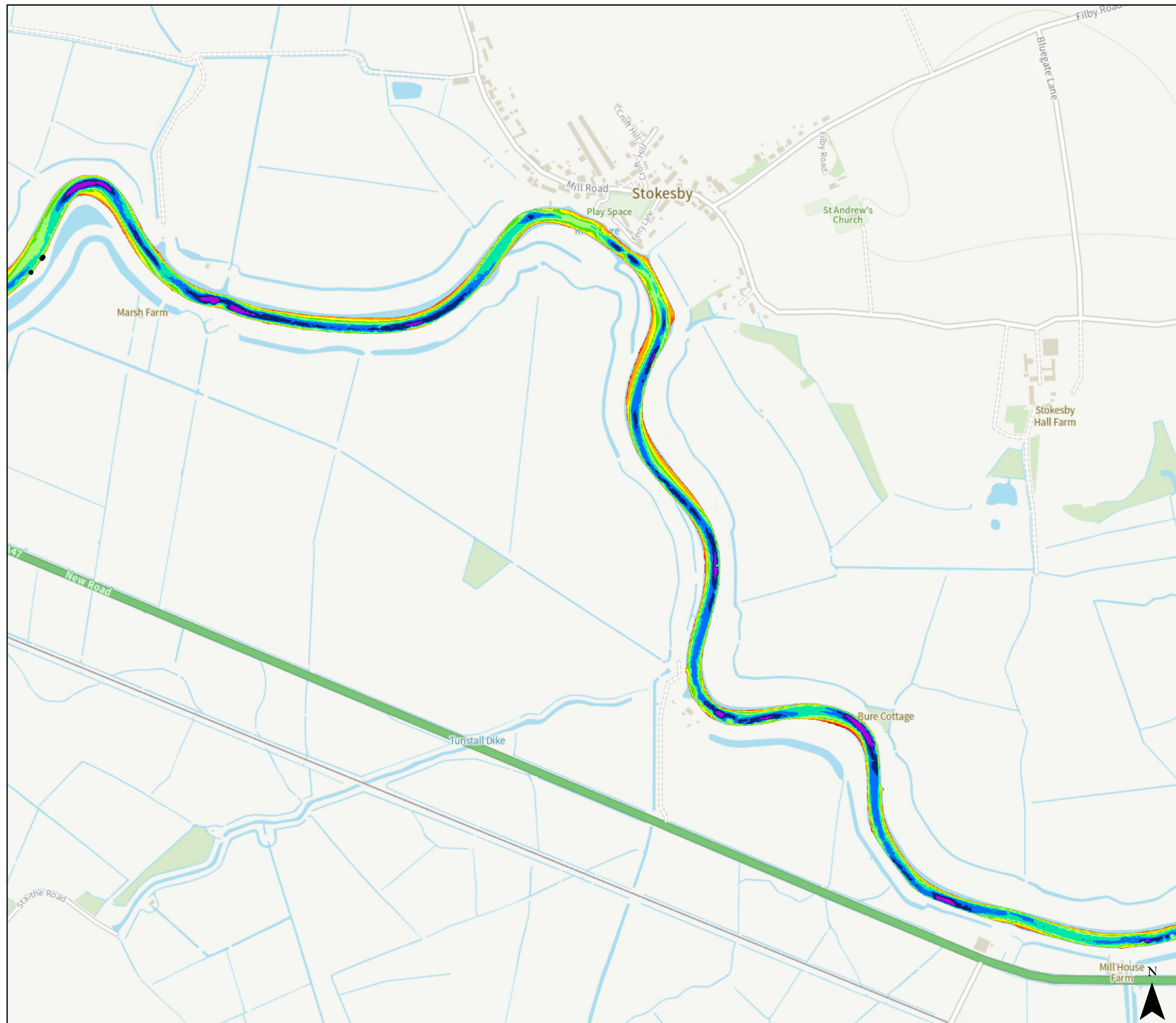
Depth below MLW (m)



● Post

© Crown copyright [and database rights] 2024 OS AC0000814754. You are permitted to use this data solely to enable you to respond to, or interact with, the organisation that provided you with the data. You are not permitted to copy, sub-licence, distribute or sell any of this data to third parties in any form.

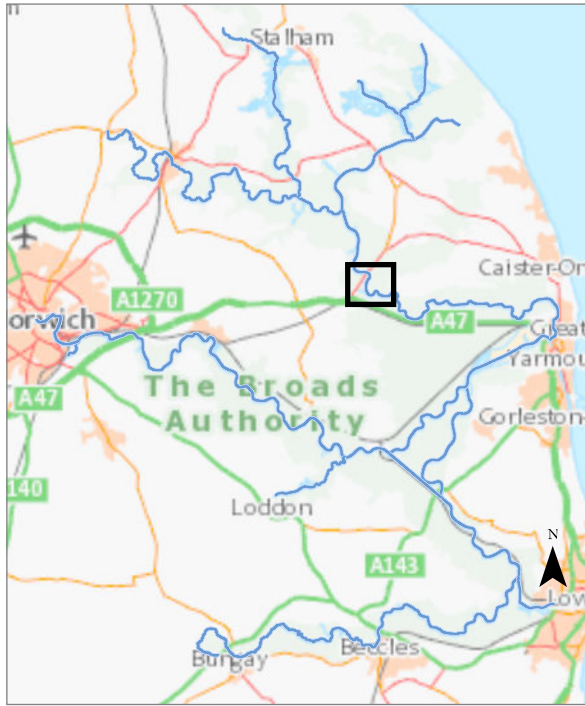
0 0.4 Kilometers





## Stokesby to Acle Bridge (Acle Reach)

The information has been published by the Broads Authority in order to meet its duties as a harbour authority under the Port Marine Safety Code and the requirements of the UK Hydrographic Office. River Bure downstream of Acle Bridge last surveyed 2023. Upstream surveyed in 2021. Acle Dyke surveyed in 2017.



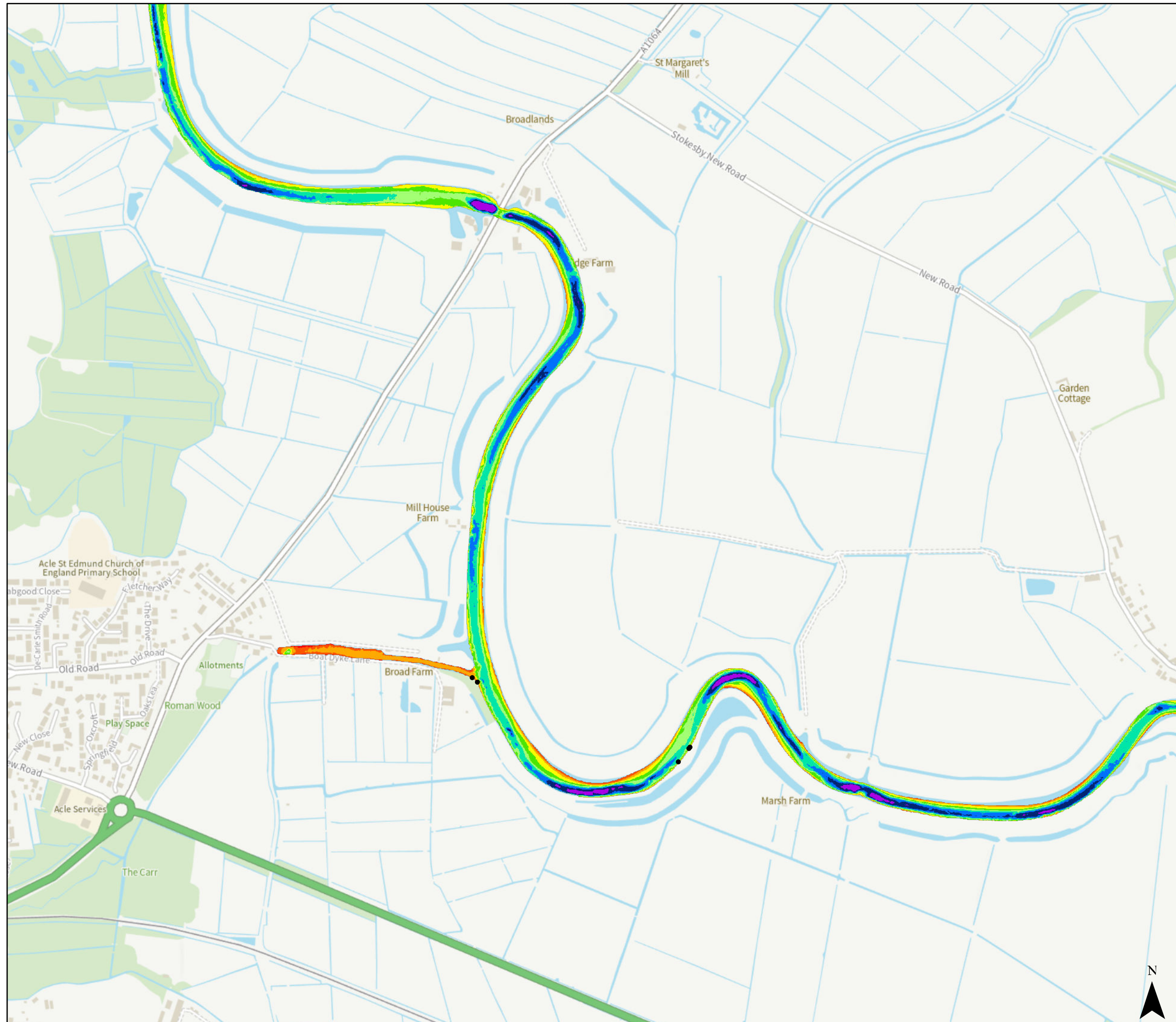
### Depth below MLW (m)



• Post

© Crown copyright [and database rights] 2024 OS AC0000814754. You are permitted to use this data solely to enable you to respond to, or interact with, the organisation that provided you with the data. You are not permitted to copy, sub-licence, distribute or sell any of this data to third parties in any form.

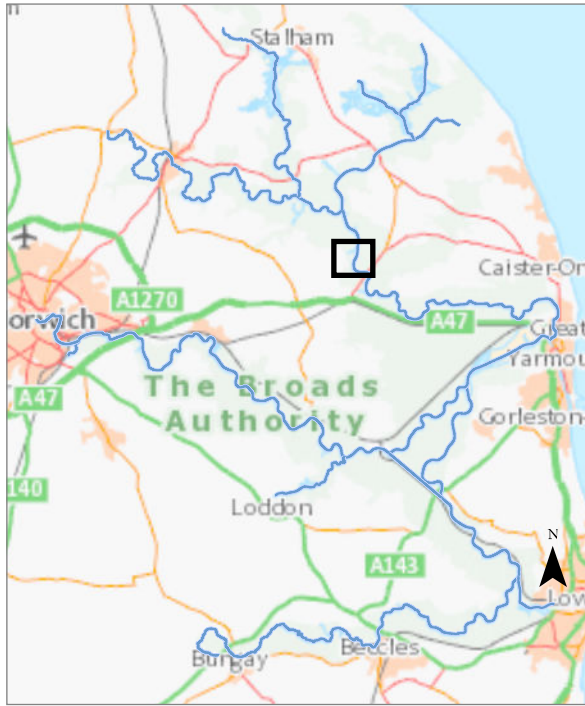
0 0.5 Kilometers





## Acle Bridge to Upton Dyke (Upton Reach)

The information has been published by the Broads Authority in order to meet its duties as a harbour authority under the Port Marine Safety Code and the requirements of the UK Hydrographic Office. Upton Dyke surveyed 2017. River Bure 2021.



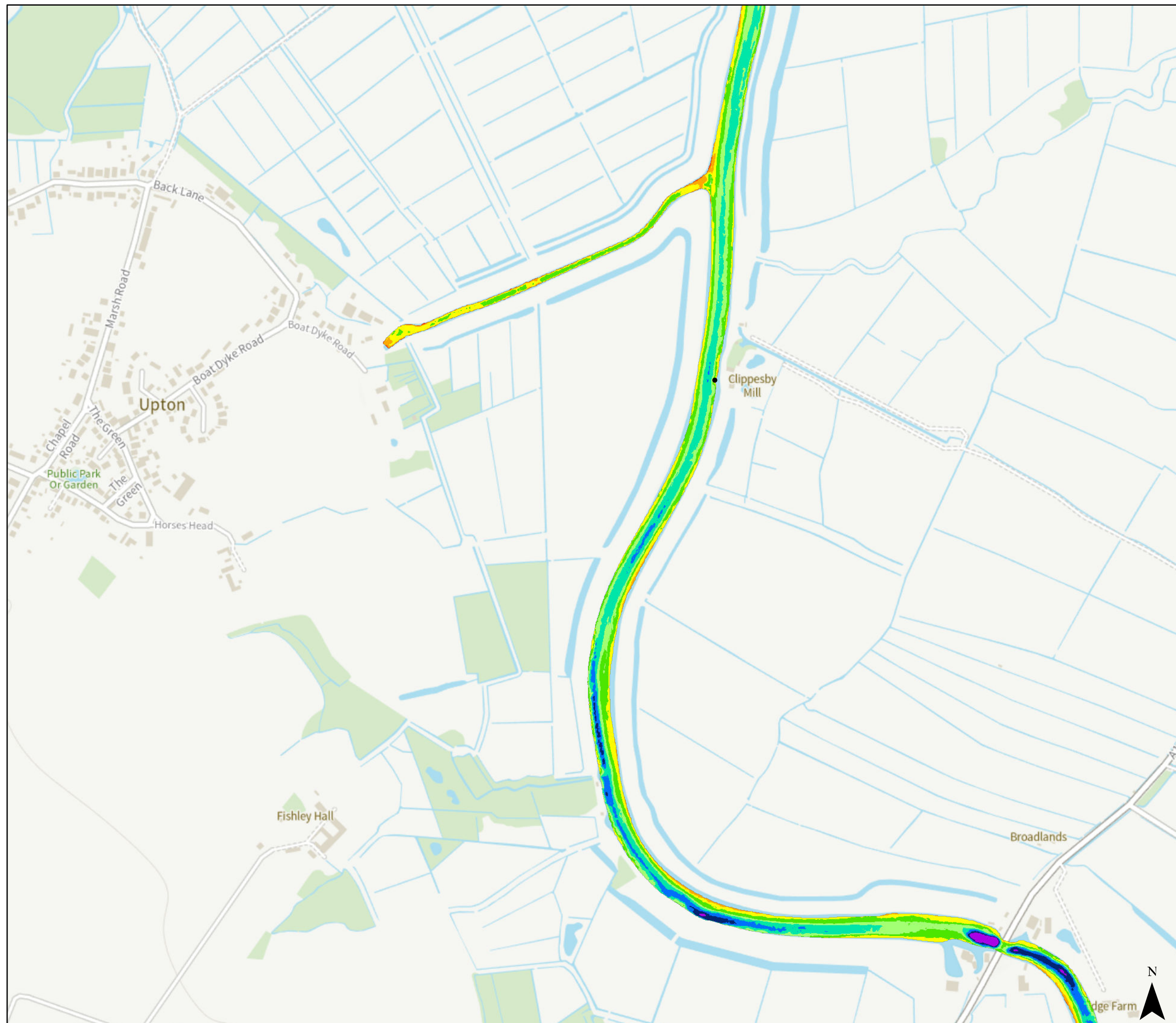
### Depth below MLW (m)



• Post

© Crown copyright [and database rights] 2024 OS AC0000814754. You are permitted to use this data solely to enable you to respond to, or interact with, the organisation that provided you with the data. You are not permitted to copy, sub-licence, distribute or sell any of this data to third parties in any form.

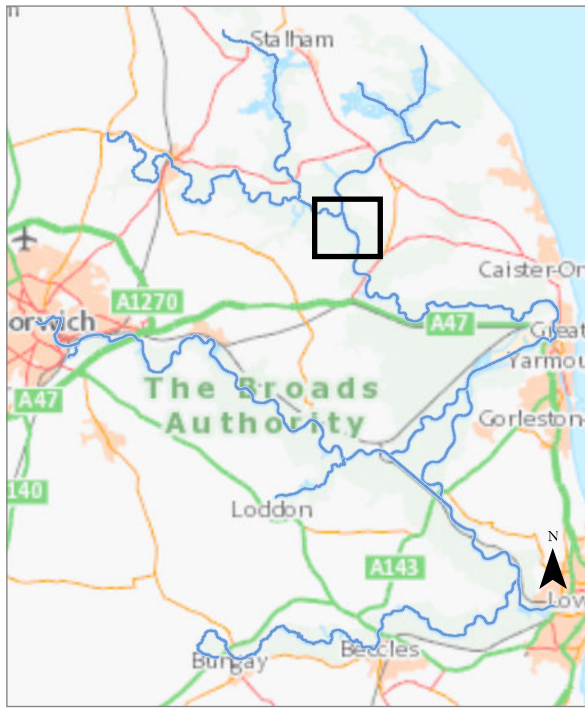
0 0.3 Kilometers



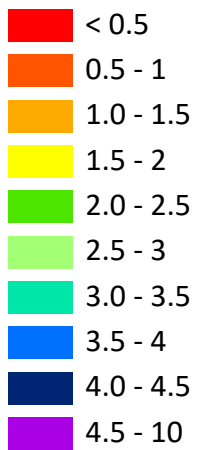


## Upton Dyke to Thurne Mouth (Thurne Mouth Reach)

The information has been published by the Broads Authority in order to meet its duties as a harbour authority under the Port Marine Safety Code and the requirements of the UK Hydrographic Office. River Thurne last surveyed 2024. River Bure last surveyed in 2021.



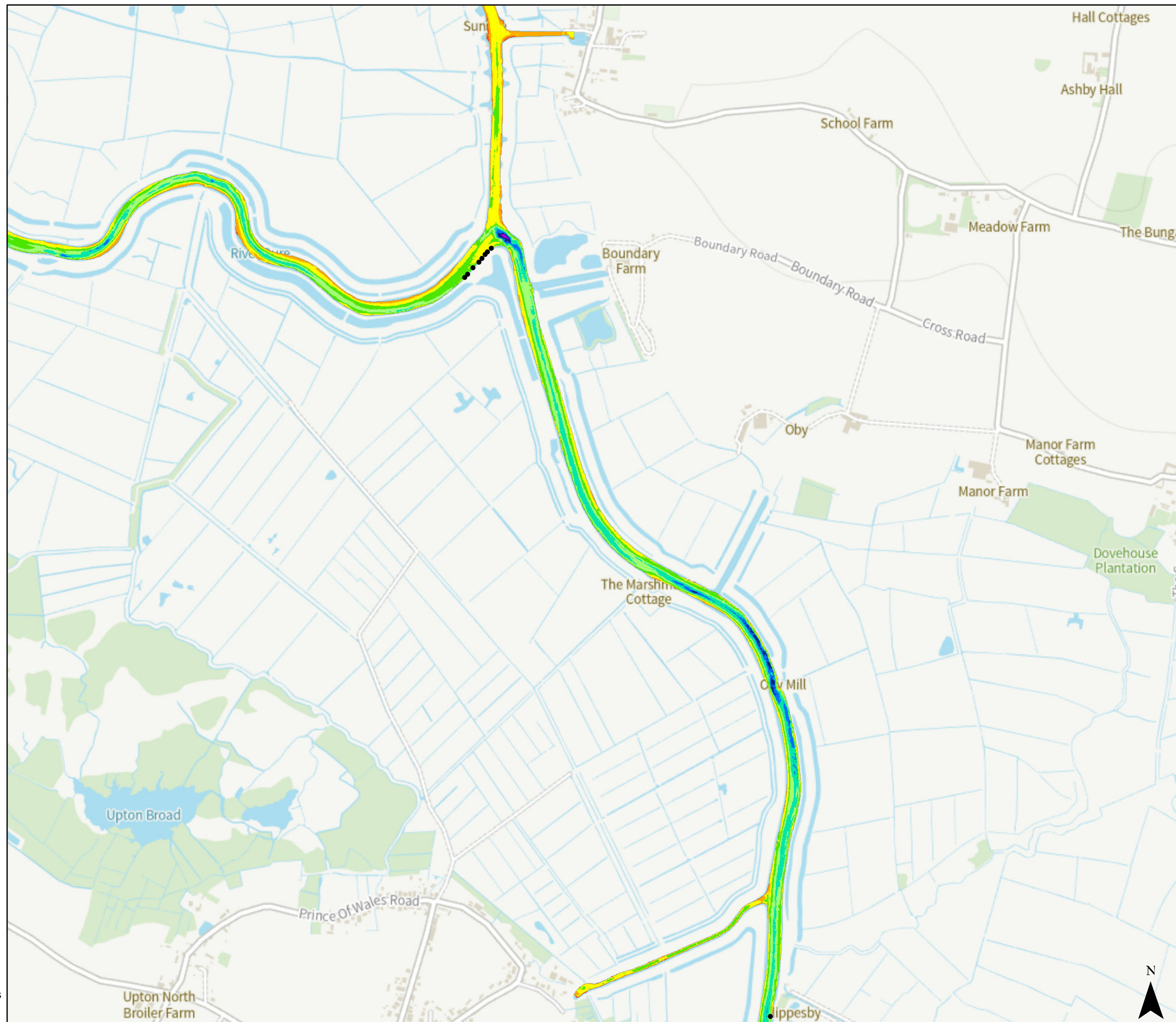
### Depth below MLW (m)



• Post

© Crown copyright [and database rights] 2024 OS AC0000814754. You are permitted to use this data solely to enable you to respond to, or interact with, the organisation that provided you with the data. You are not permitted to copy, sub-licence, distribute or sell any of this data to third parties in any form.

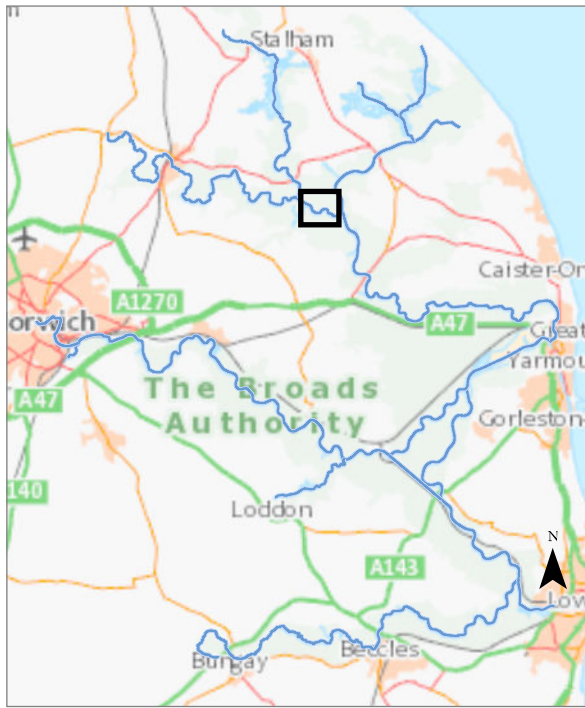
0 0.7 Kilometers



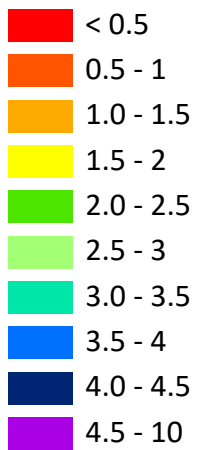


## Thurne Mouth to Fleet Dyke (St Benet's Reach)

The information has been published by the Broads Authority in order to meet its duties as a harbour authority under the Port Marine Safety Code and the requirements of the UK Hydrographic Office. Last surveyed 2021.



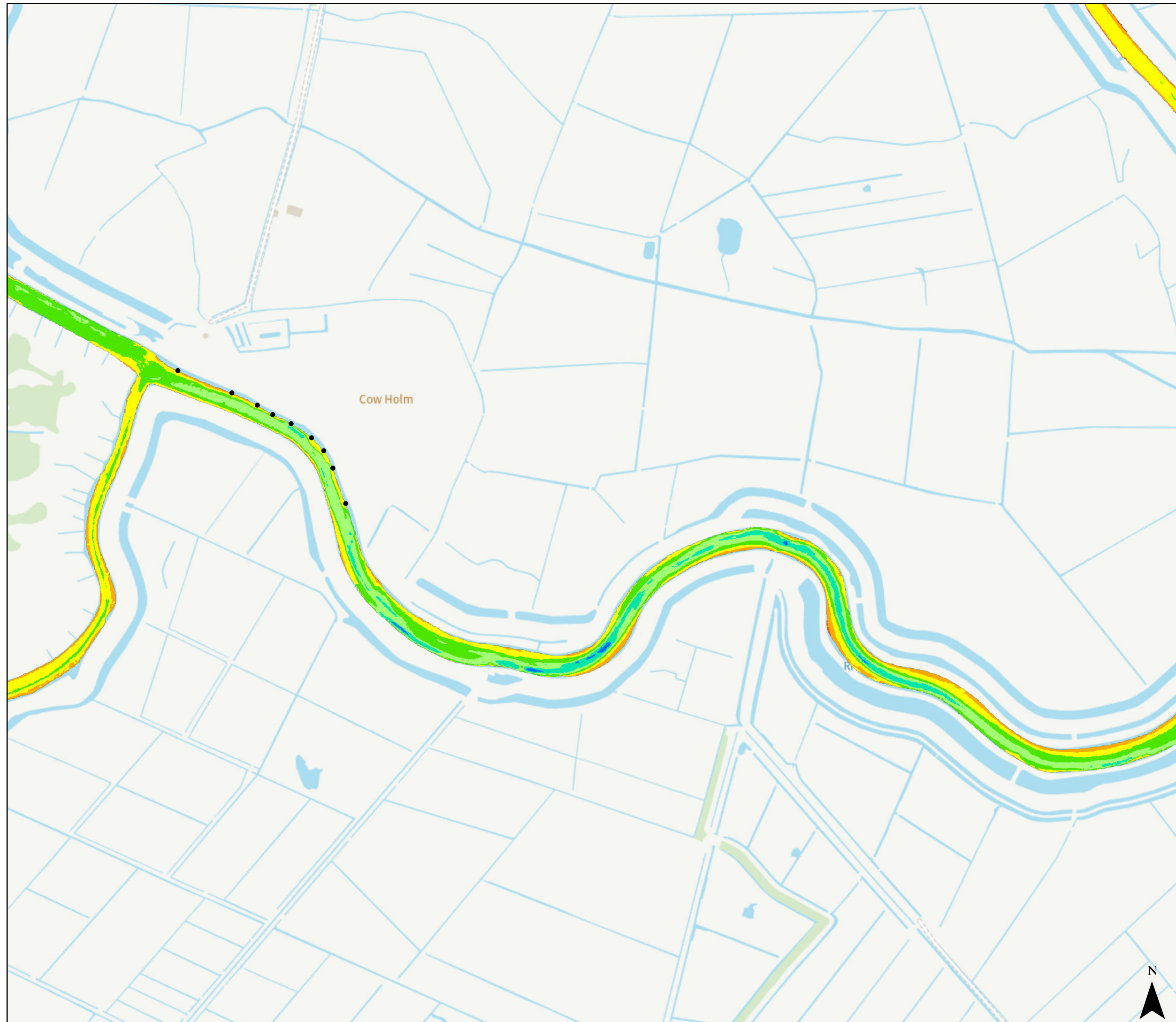
Depth below MLW (m)



• Post

© Crown copyright [and database rights] 2024 OS AC0000814754. You are permitted to use this data solely to enable you to respond to, or interact with, the organisation that provided you with the data. You are not permitted to copy, sub-licence, distribute or sell any of this data to third parties in any form.

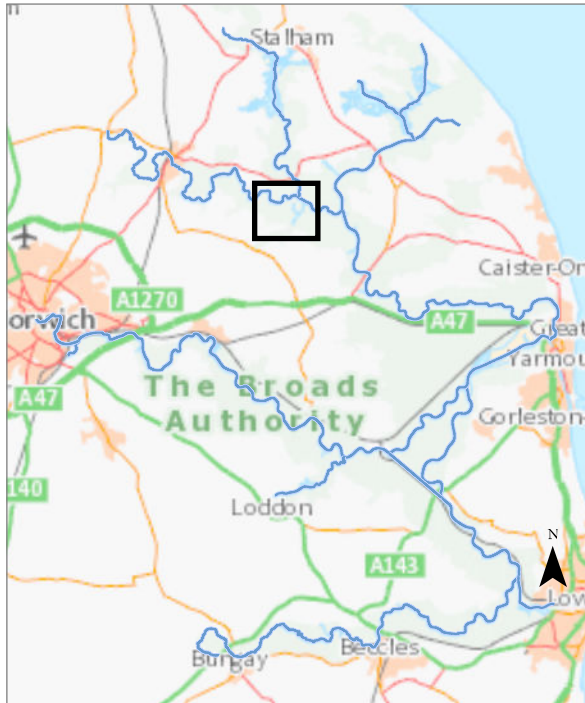
0 0.3 Kilometers





## South Walsham and Malthouse Broads (Ranworth Reach)

The information has been published by the Broads Authority in order to meet its duties as a harbour authority under the Port Marine Safety Code and the requirements of the UK Hydrographic Office. River Bure surveyed 2021. Ranworth Dam 2023. River Ant surveyed in 2022. Fleet Dyke 2020. South Walsham Broad 2021.



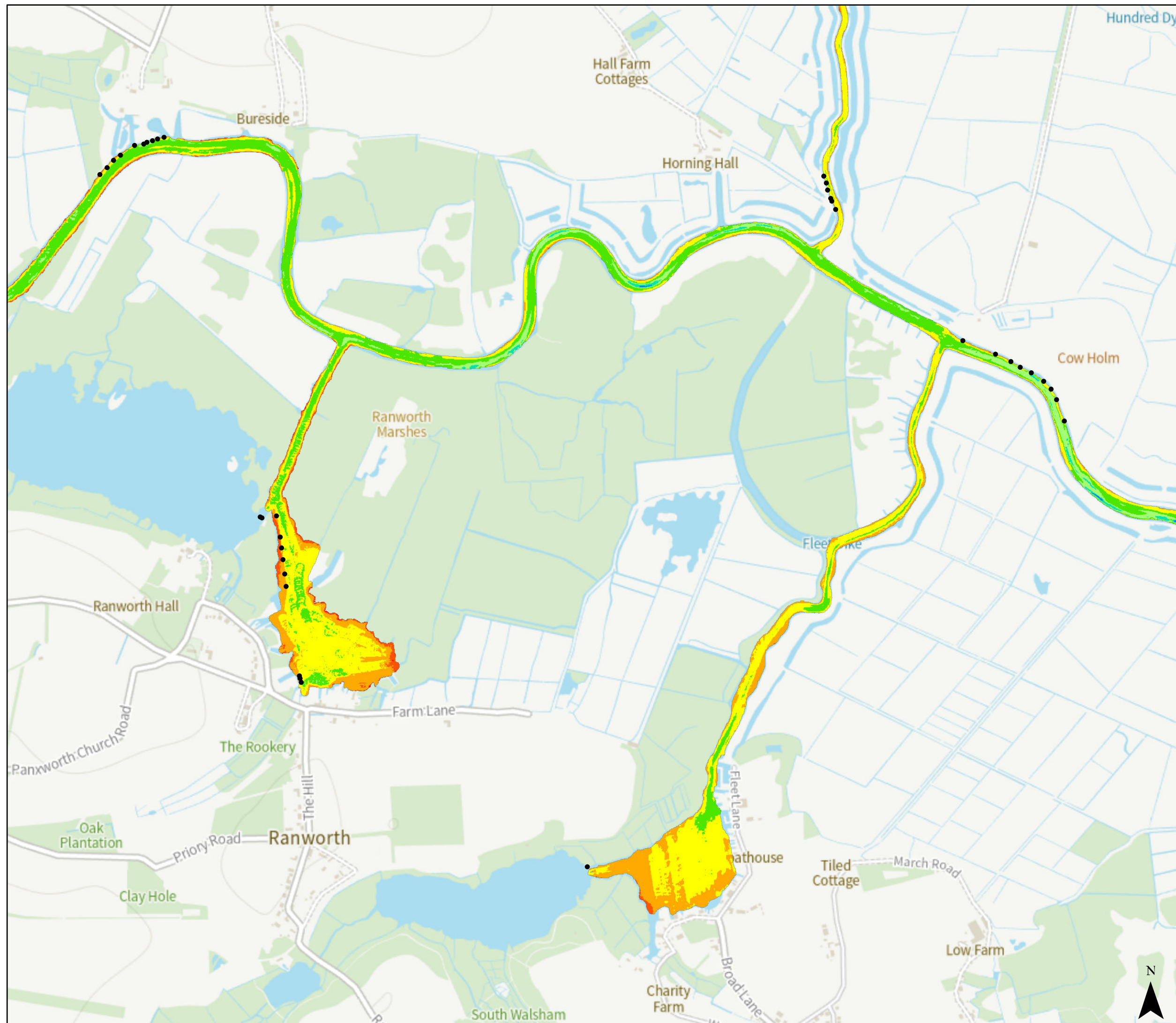
Depth below MLW (m)



• Post

© Crown copyright [and database rights] 2024 OS AC0000814754. You are permitted to use this data solely to enable you to respond to, or interact with, the organisation that provided you with the data. You are not permitted to copy, sub-licence, distribute or sell any of this data to third parties in any form.

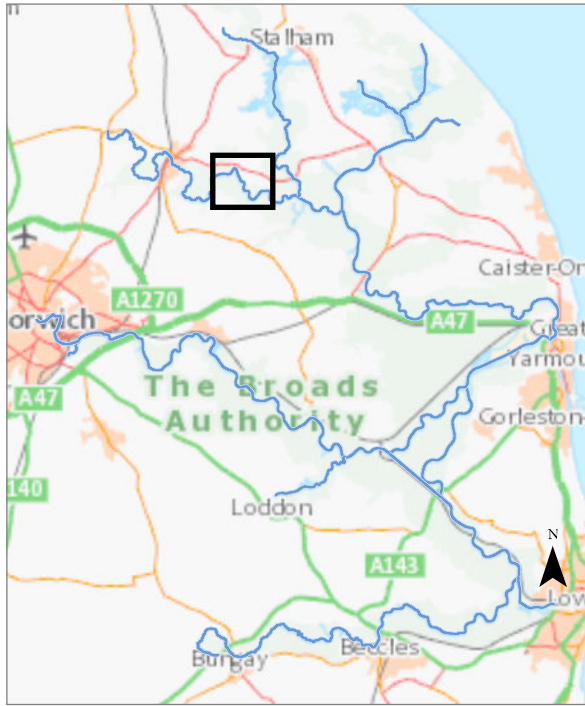
0 0.6 Kilometers





## Ranworth Dam to Decoy Broad (Horning Reach)

The information has been published by the Broads Authority in order to meet its duties as a harbour authority under the Port Marine Safety Code and the requirements of the UK Hydrographic Office. Last surveyed winter 2018.



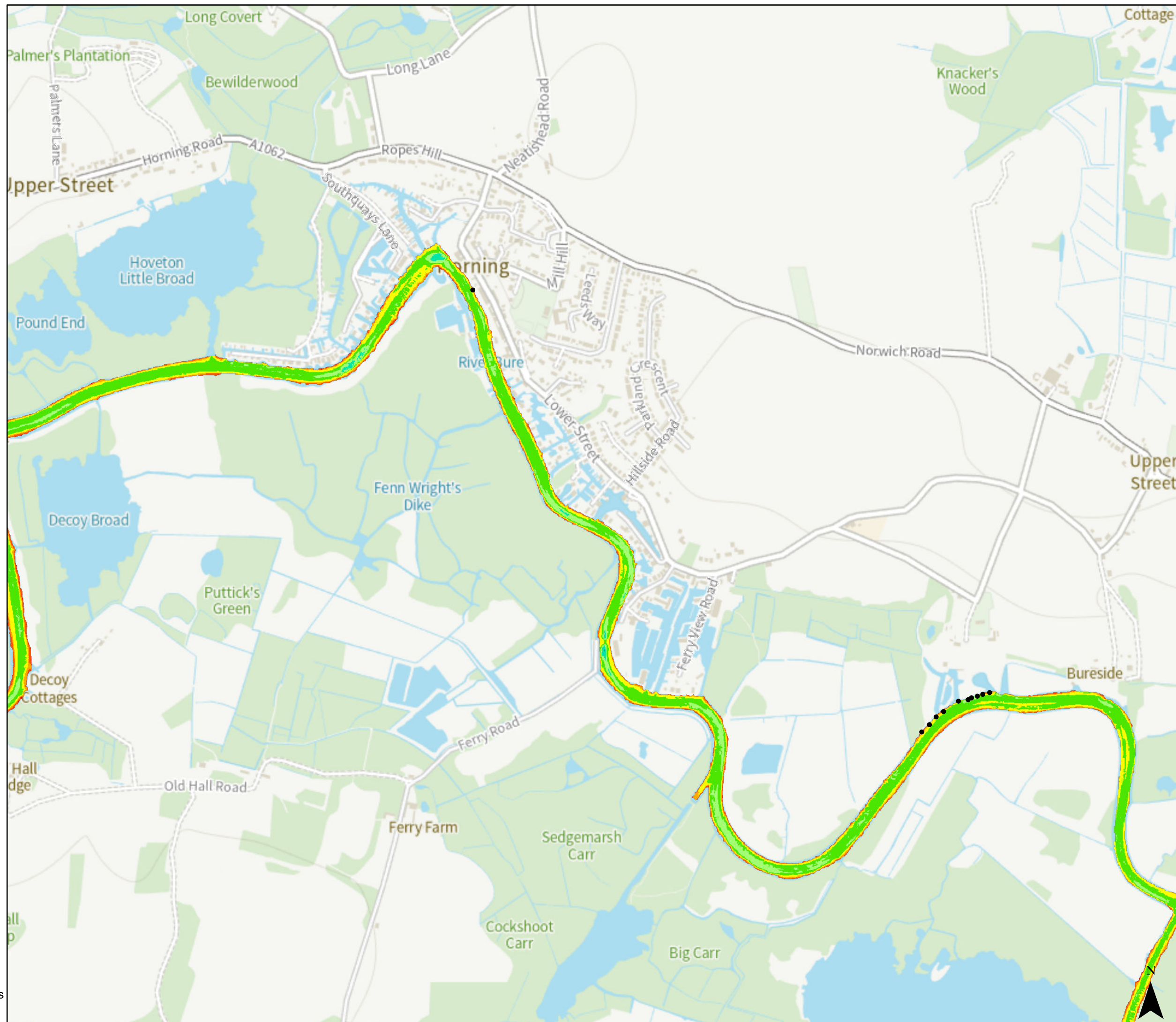
Depth below MLW (m)



• Post

© Crown copyright [and database rights] 2024 OS AC0000814754. You are permitted to use this data solely to enable you to respond to, or interact with, the organisation that provided you with the data. You are not permitted to copy, sub-licence, distribute or sell any of this data to third parties in any form.

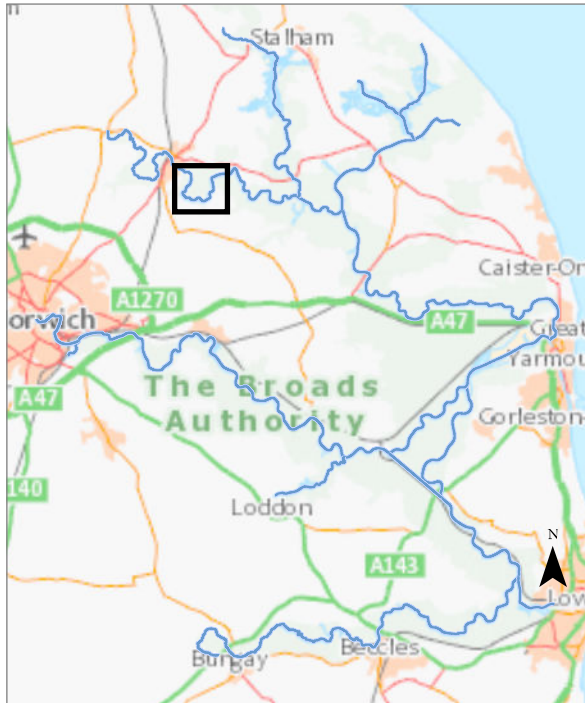
0 0.6 Kilometers





## Decoy Broad to Wroxham Broad (Salhouse Reach)

The information has been published by the Broads Authority in order to meet its duties as a harbour authority under the Port Marine Safety Code and the requirements of the UK Hydrographic Office. Upstream of Horning Church last surveyed 2022. Downstream surveyed winter 2018. Wroxham Broad surveyed 2021.



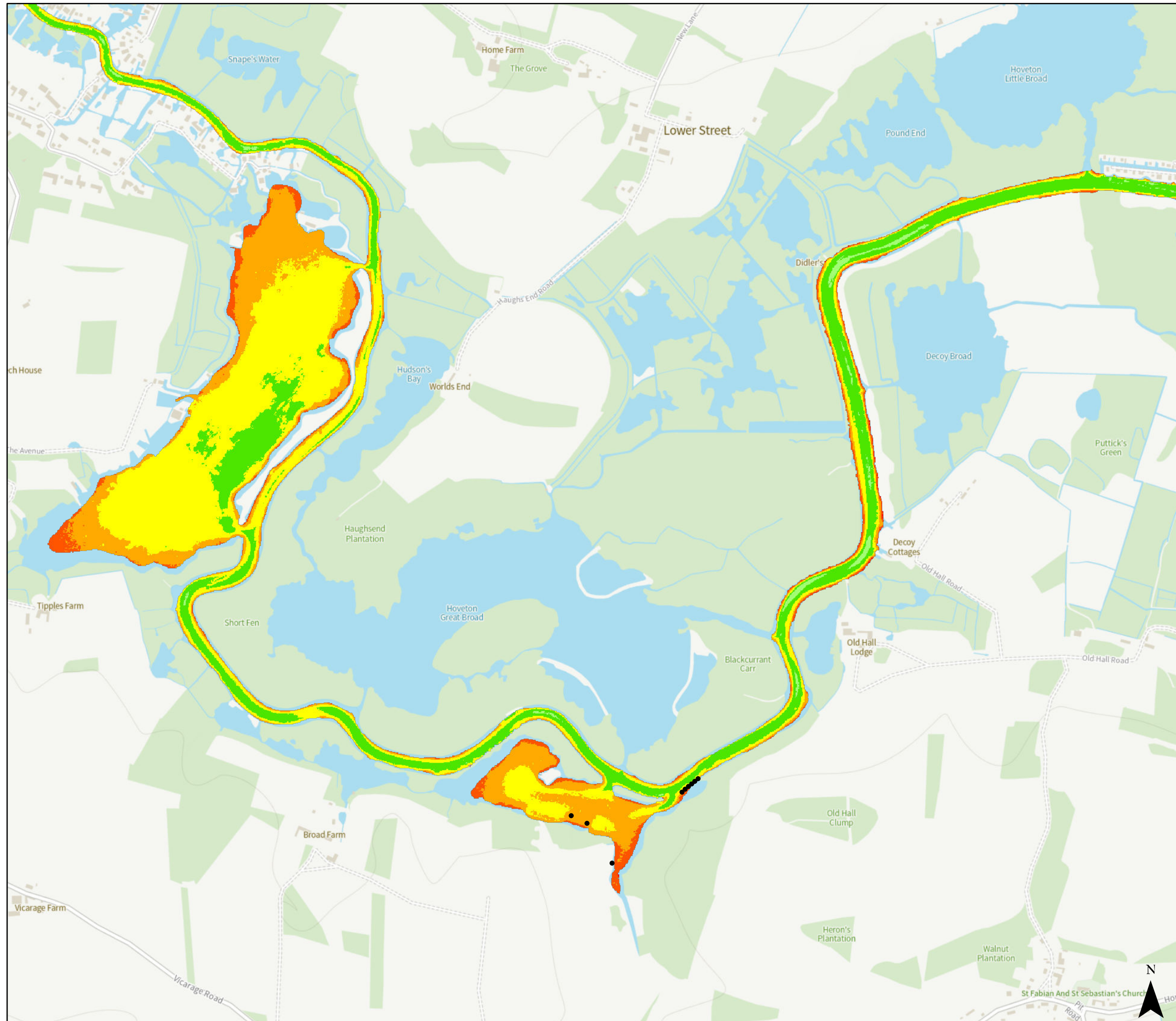
### Depth below MLW (m)

- < 0.5
- 0.5 - 1
- 1.0 - 1.5
- 1.5 - 2
- 2.0 - 2.5
- 2.5 - 3
- 3.0 - 3.5
- 3.5 - 4
- 4.0 - 4.5
- 4.5 - 10

• Post

© Crown copyright [and database rights] 2024 OS AC0000814754. You are permitted to use this data solely to enable you to respond to, or interact with, the organisation that provided you with the data. You are not permitted to copy, sub-licence, distribute or sell any of this data to third parties in any form.

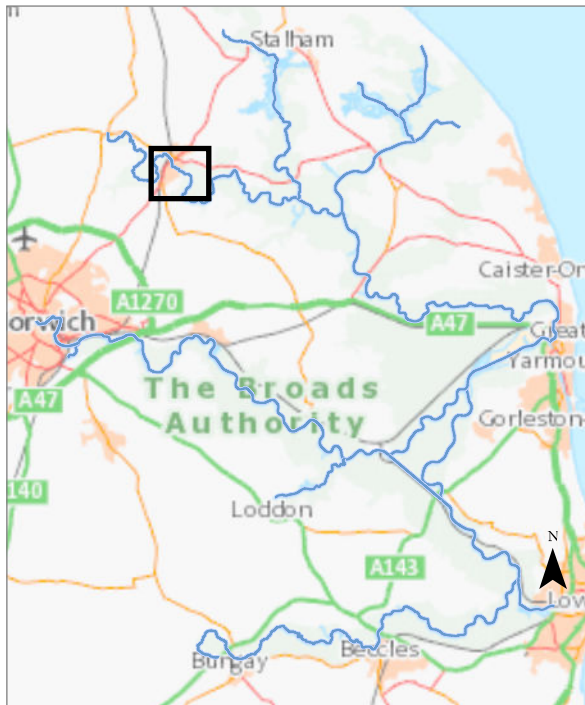
0 0.5 Kilometers



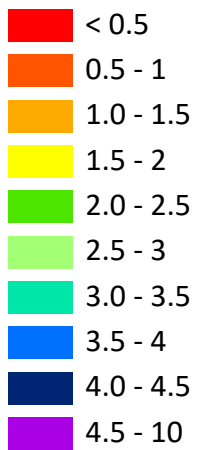


## Wroxham Broad to Wroxham Railway Bridge (Wroxham Reach)

The information has been published by the Broads Authority in order to meet its duties as a harbour authority under the Port Marine Safety Code and the requirements of the UK Hydrographic Office. River Bure surveyed 2022. Wroxham Broad surveyed 2021.



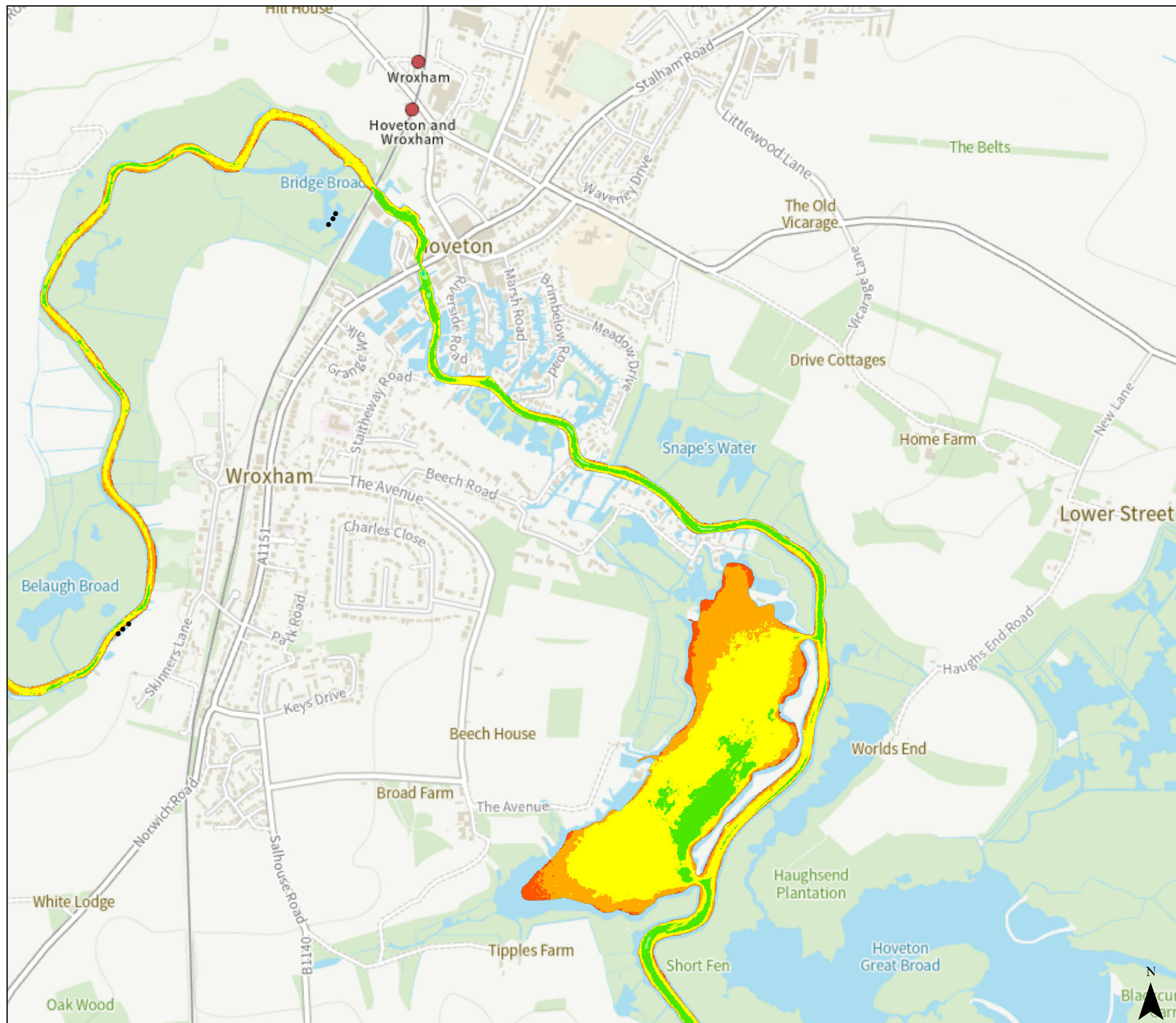
Depth below MLW (m)



• Post

© Crown copyright [and database rights] 2024 OS AC0000814754. You are permitted to use this data solely to enable you to respond to, or interact with, the organisation that provided you with the data. You are not permitted to copy, sub-licence, distribute or sell any of this data to third parties in any form.

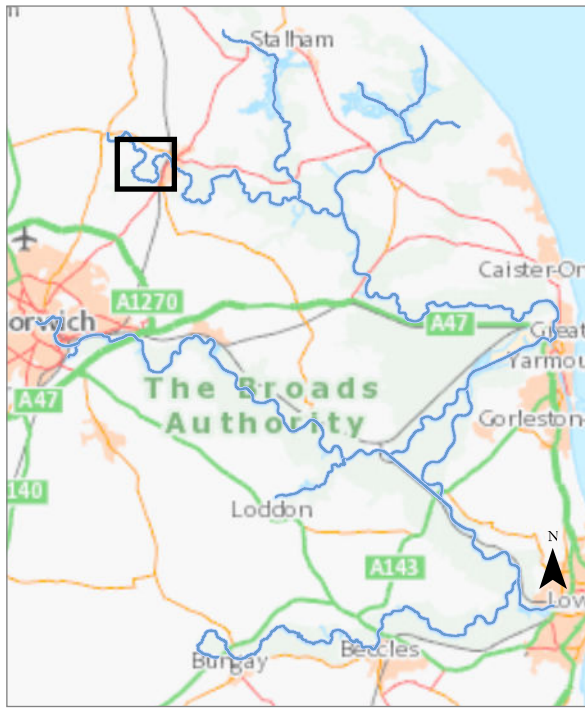
0 0.6 Kilometers





## Wroxham Railway Bridge to Belaugh (Belaugh Reach)

The information has been published by the Broads Authority in order to meet its duties as a harbour authority under the Port Marine Safety Code and the requirements of the UK Hydrographic Office. Surveyed in 2022.



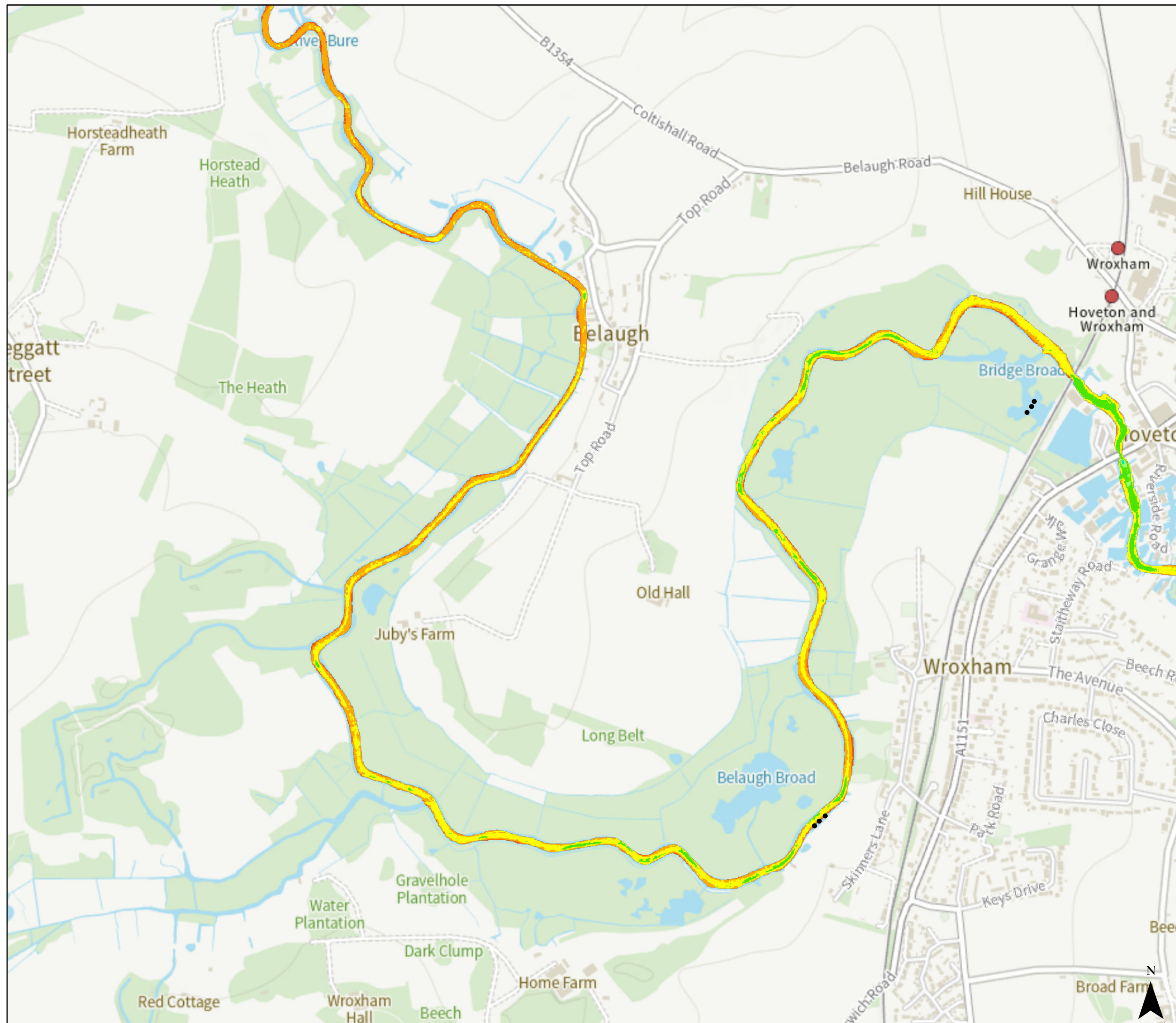
Depth below MLW (m)



• Post

© Crown copyright [and database rights] 2024 OS AC0000814754. You are permitted to use this data solely to enable you to respond to, or interact with, the organisation that provided you with the data. You are not permitted to copy, sub-licence, distribute or sell any of this data to third parties in any form.

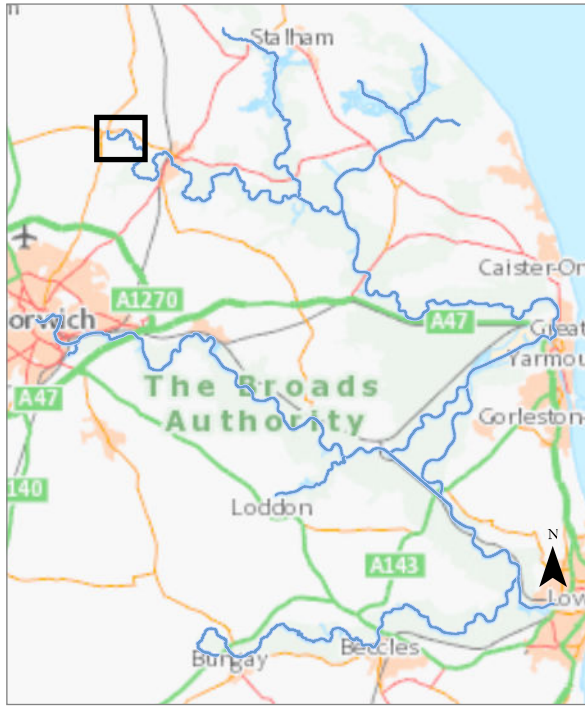
0 0.6 Kilometers





## Belough to Coltishall Lock (Coltishall Reach)

The information has been published by the Broads Authority in order to meet its duties as a harbour authority under the Port Marine Safety Code and the requirements of the UK Hydrographic Office. River Bure last surveyed 2022. Horstead Mill 2017.

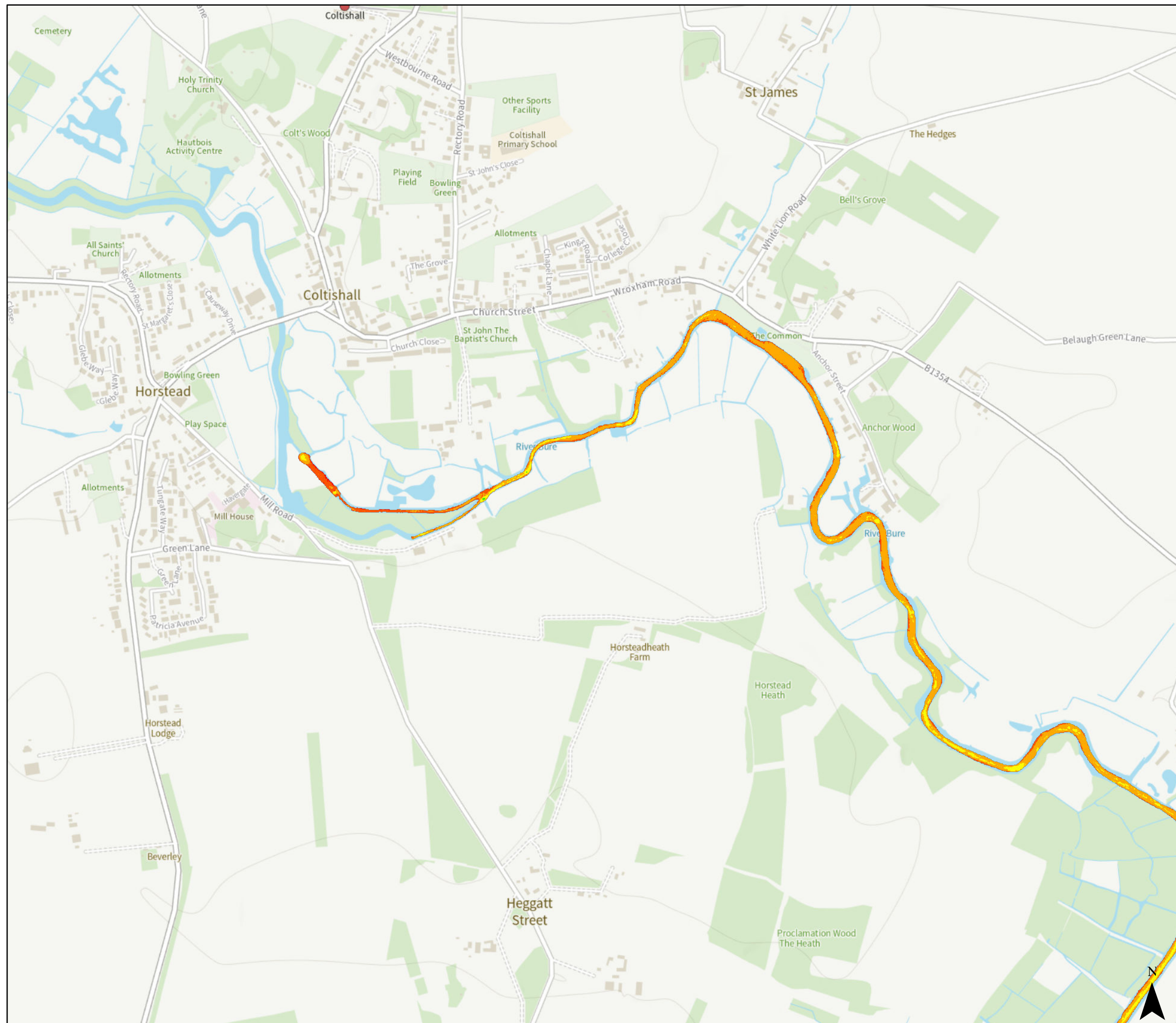


Depth below MLW (m)



© Crown copyright [and database rights] 2024 OS AC0000814754. You are permitted to use this data solely to enable you to respond to, or interact with, the organisation that provided you with the data. You are not permitted to copy, sub-licence, distribute or sell any of this data to third parties in any form.

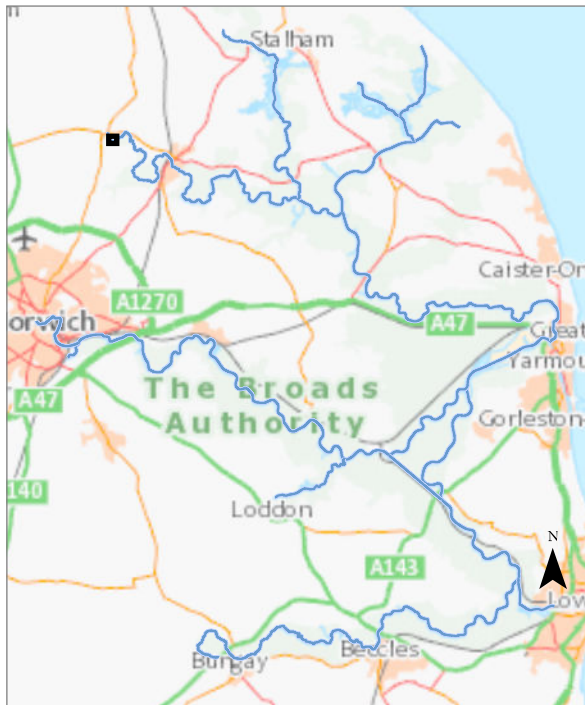
0 0.5 Kilometers



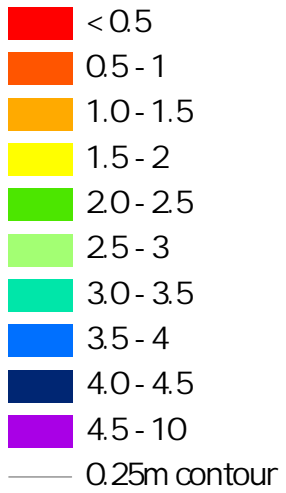


# Coltishall Lock (detailed)

The information has been published by the Broads Authority in order to meet its duties as a harbour authority under the Port Marine Safety Code and the requirements of the UK Hydrographic Office. River Bure last surveyed 2022. Horstead Mill 2017.



## Depth below MLW (m)



© Crown copyright [and database rights] 2024 OS AC0000814754. You are permitted to use this data solely to enable you to respond to, or interact with, the organisation that provided you with the data. You are not permitted to copy, sublicense, distribute or sell any of this data to third parties in any form.

