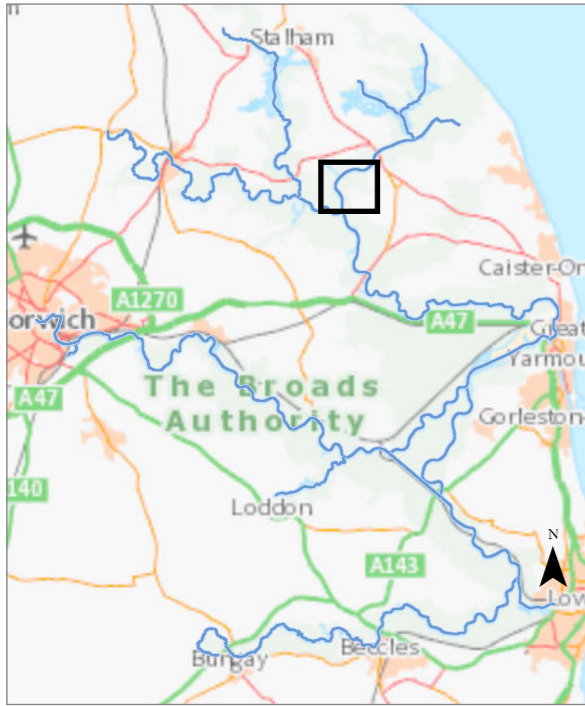


Thurne Mouth to Womack Dyke (Thurne Reach)

The information has been published by the Broads Authority in order to meet its duties as a harbour authority under the Port Marine Safety Code and the requirements of the UK Hydrographic Office. Last surveyed 2024.



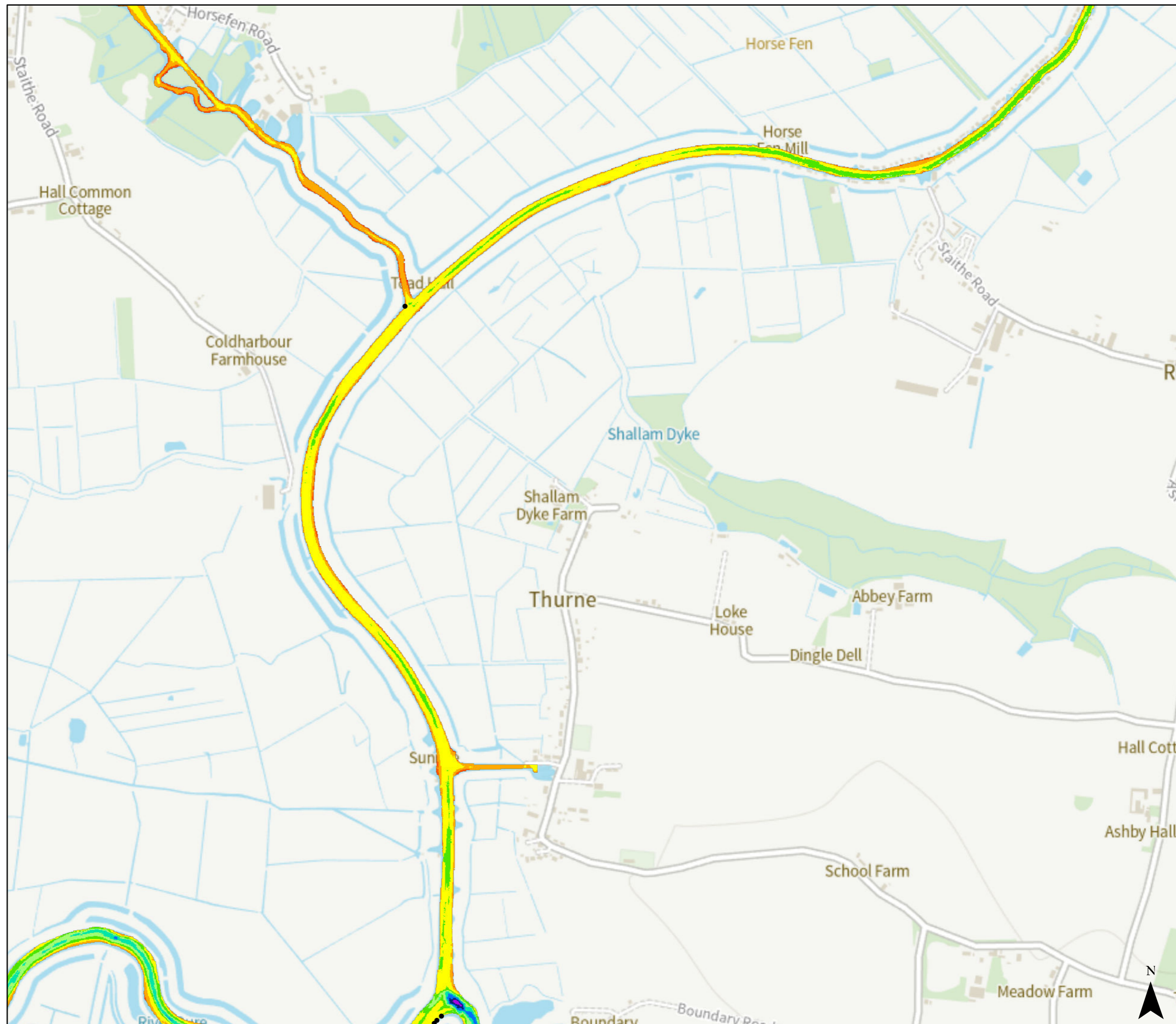
Depth below MLW (m)



• Post

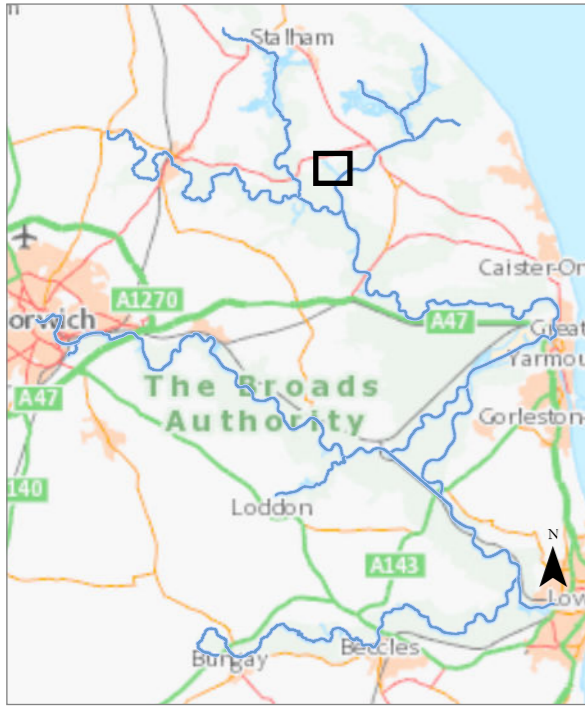
© Crown copyright [and database rights] 2024 OS AC0000814754. You are permitted to use this data solely to enable you to respond to, or interact with, the organisation that provided you with the data. You are not permitted to copy, sub-licence, distribute or sell any of this data to third parties in any form.

0 0.6 Kilometers



Womack Dyke and Womack Water (Womack Water)

The information has been published by the Broads Authority in order to meet its duties as a harbour authority under the Port Marine Safety Code and the requirements of the UK Hydrographic Office. Last surveyed 2024.



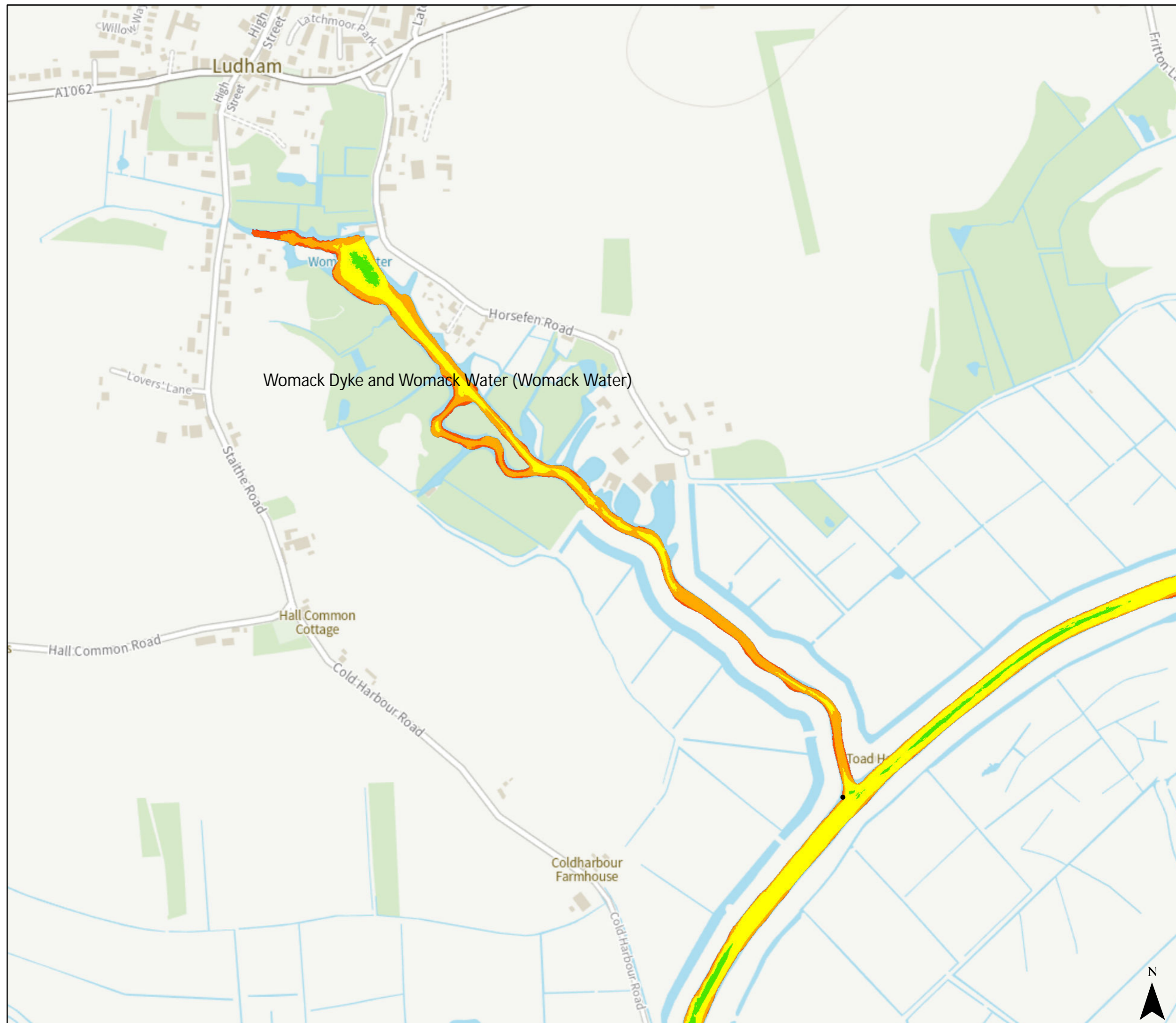
Depth below MLW (m)



• Post

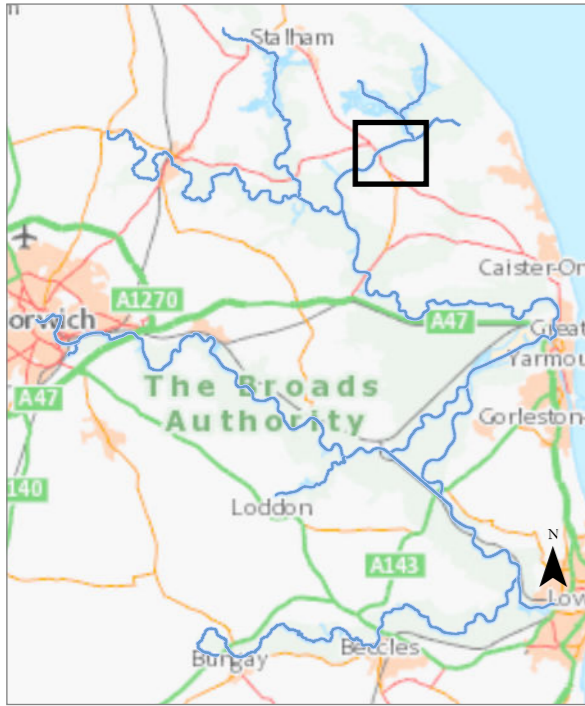
© Crown copyright [and database rights] 2024 OS AC0000814754. You are permitted to use this data solely to enable you to respond to, or interact with, the organisation that provided you with the data. You are not permitted to copy, sub-licence, distribute or sell any of this data to third parties in any form.

0 0.3 Kilometers



Womack Dyke to Candle Dyke (Potter Heigham Reach)

The information has been published by the Broads Authority in order to meet its duties as a harbour authority under the Port Marine Safety Code and the requirements of the UK Hydrographic Office. Last surveyed 2024.



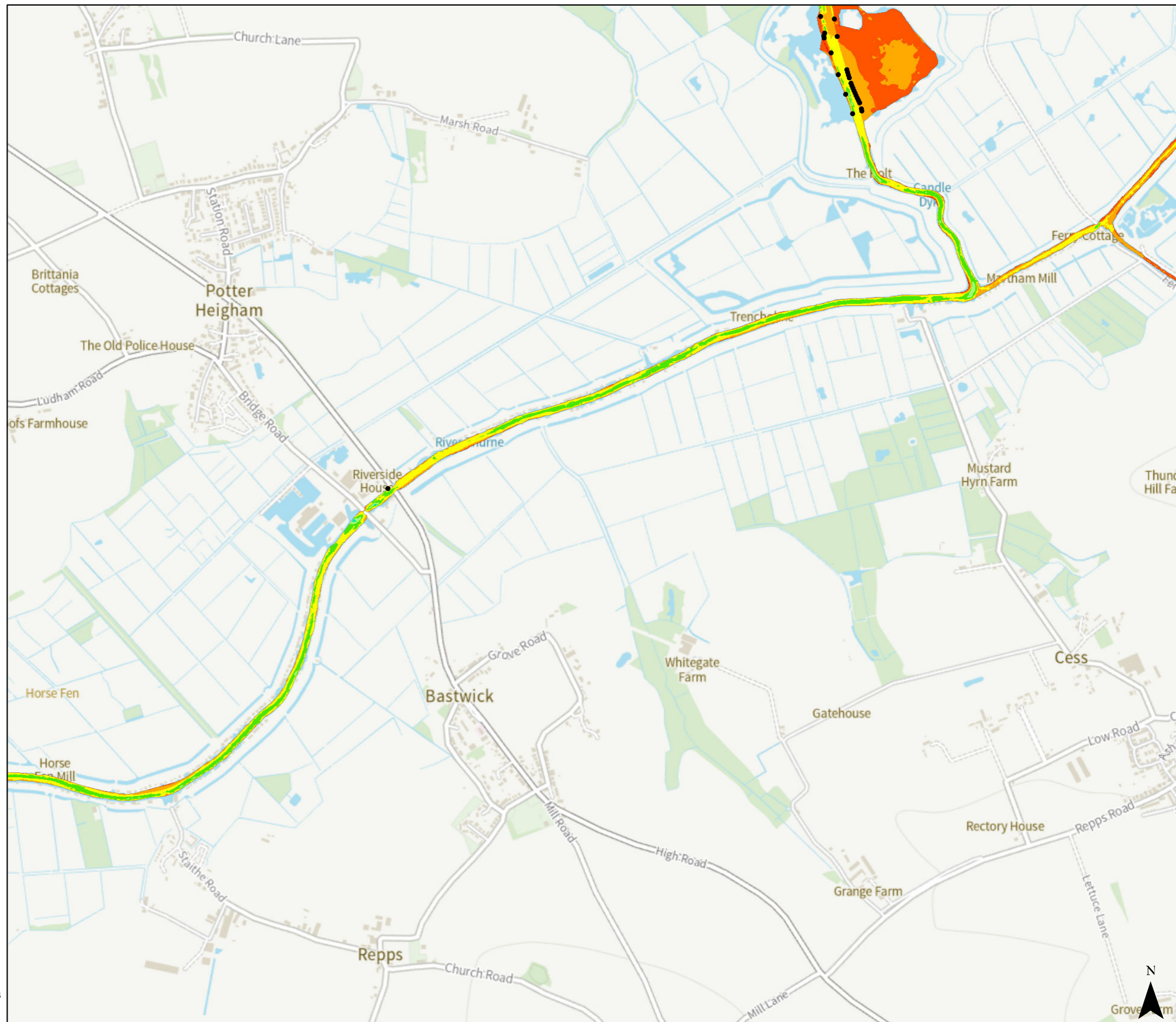
Depth below MLW (m)



• Post

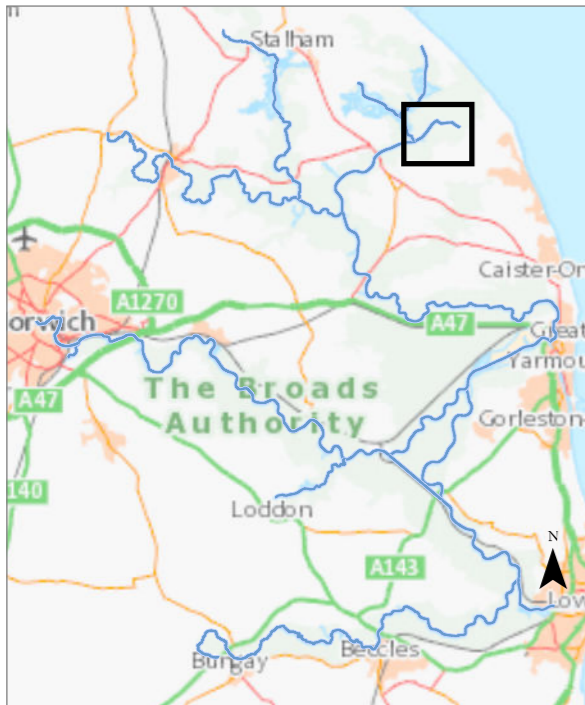
© Crown copyright [and database rights] 2024 OS AC0000814754. You are permitted to use this data solely to enable you to respond to, or interact with, the organisation that provided you with the data. You are not permitted to copy, sub-licence, distribute or sell any of this data to third parties in any form.

0 0.7 Kilometers



Candle Dyke to West Somerton (Somerton Reach)

The information has been published by the Broads Authority in order to meet its duties as a harbour authority under the Port Marine Safety Code and the requirements of the UK Hydrographic Office. Last surveyed 2024. West Somerton 2019.

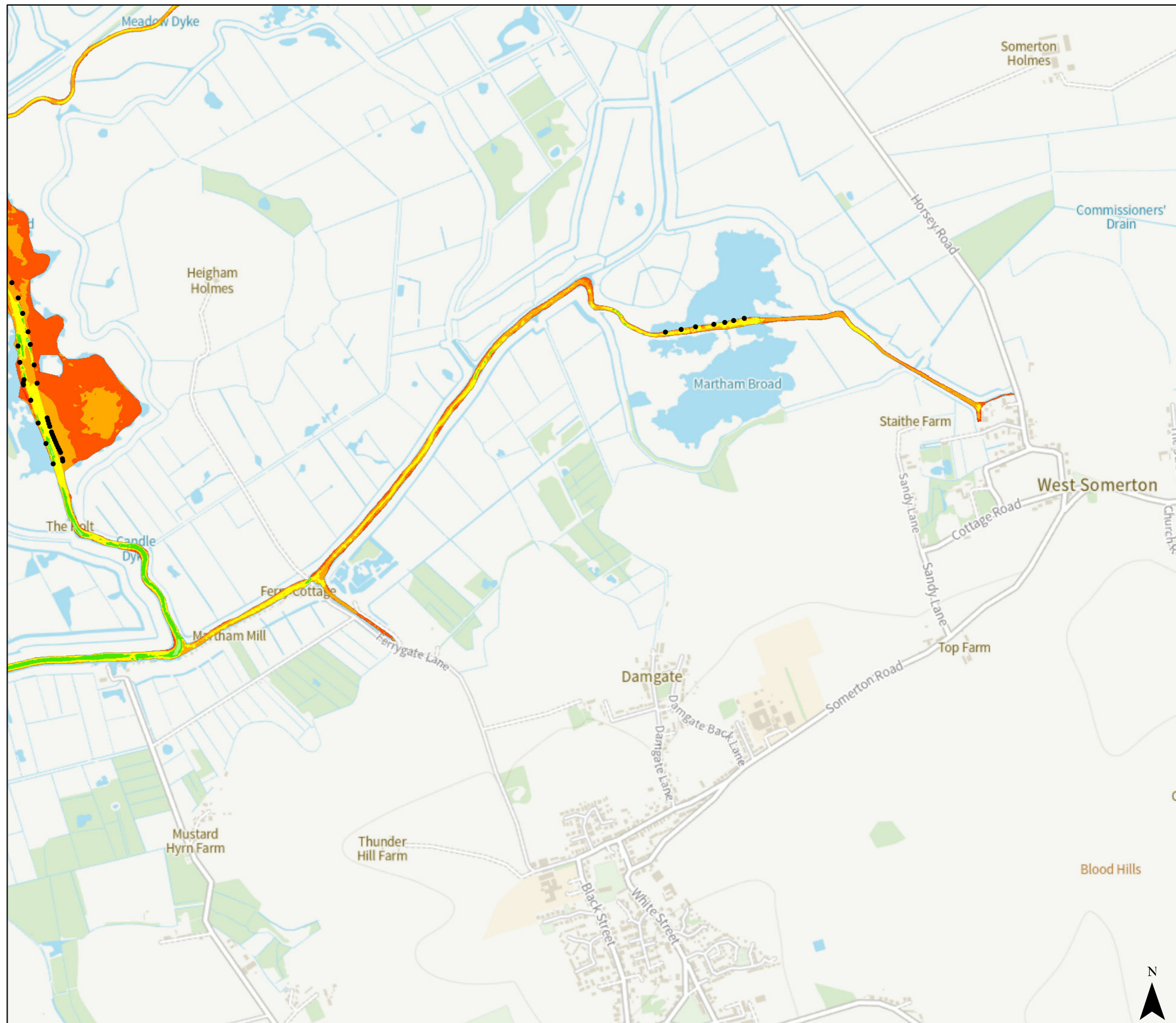


Depth below MLW (m)



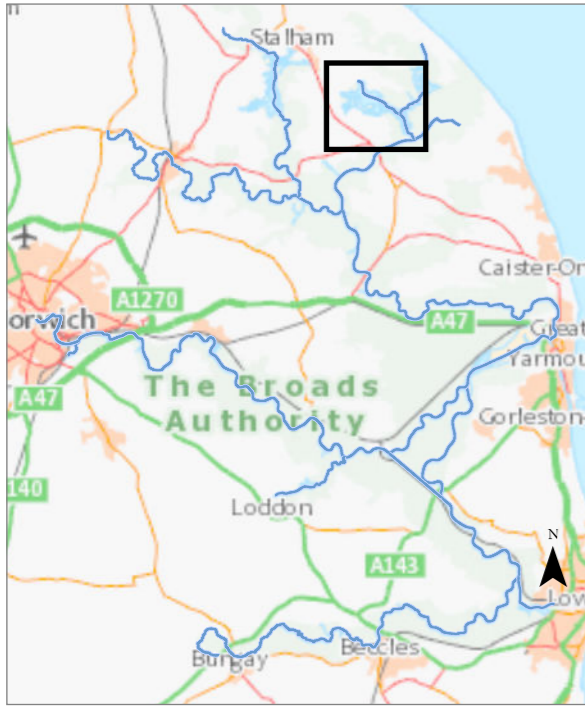
• Post

© Crown copyright [and database rights] 2024 OS AC0000814754. You are permitted to use this data solely to enable you to respond to, or interact with, the organisation that provided you with the data. You are not permitted to copy, sub-licence, distribute or sell any of this data to third parties in any form.

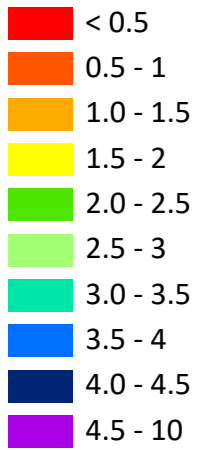


Candle Dyke, Hickling Broad and Heigham Sound

The information has been published by the Broads Authority in order to meet its duties as a harbour authority under the Port Marine Safety Code and the requirements of the UK Hydrographic Office. Hickling Broad & Heigham Sound channel surveyed in 2024 (outside channel 2014). Catfield Dyke & Candle Dyke 2024.

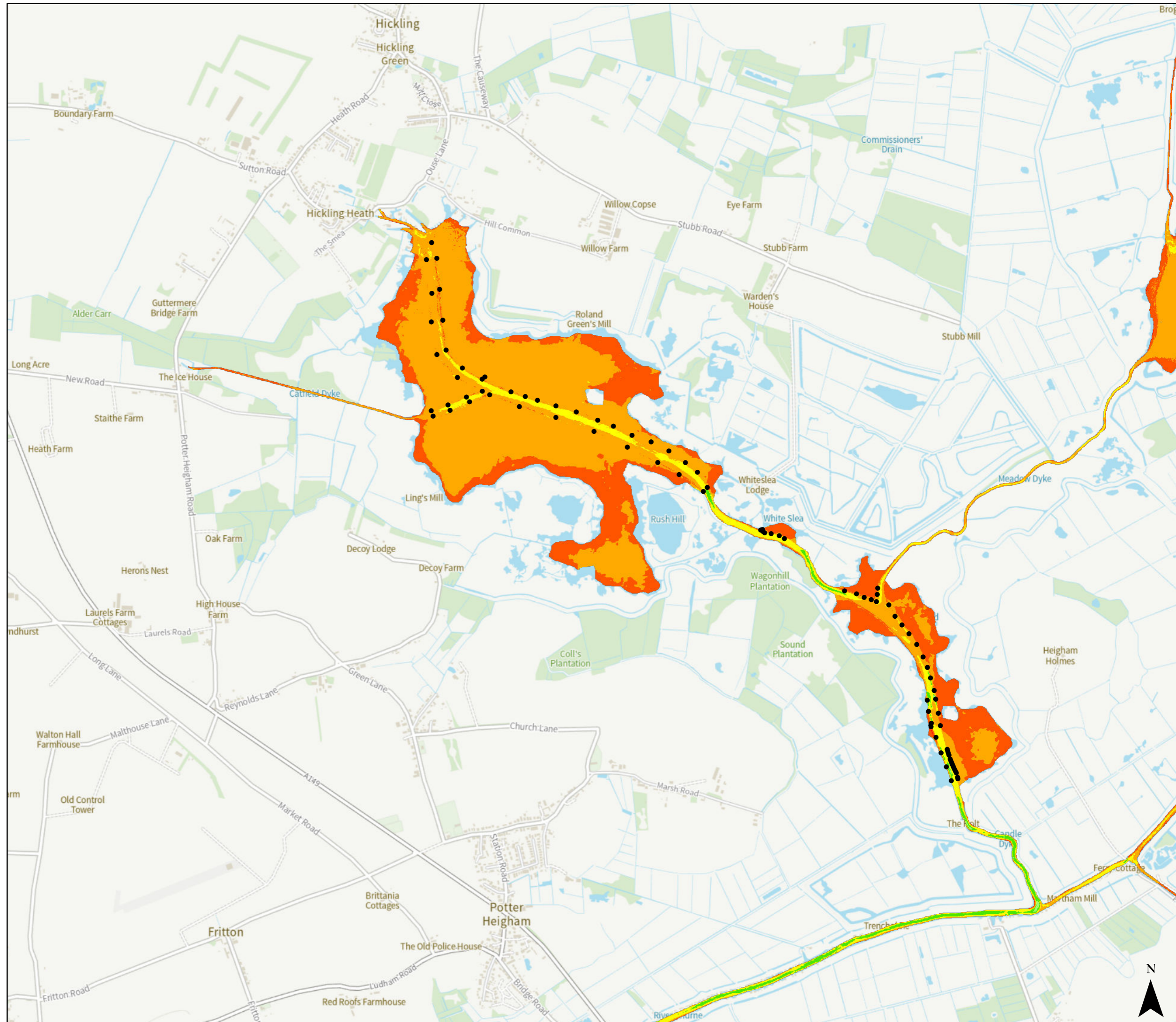


Depth below MLW (m)



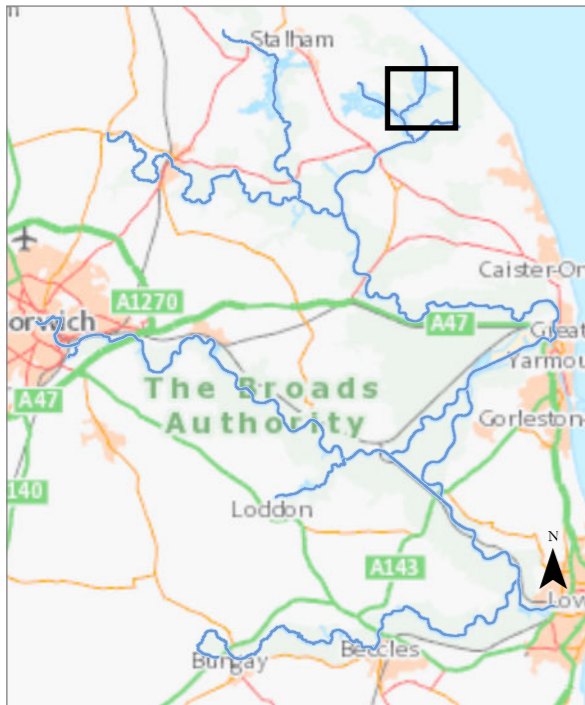
• Post

© Crown copyright [and database rights] 2024 OS AC0000814754. You are permitted to use this data solely to enable you to respond to, or interact with, the organisation that provided you with the data. You are not permitted to copy, sub-licence, distribute or sell any of this data to third parties in any form.



Horsey Mere and Meadow Dyke (Horsey Mere and Meadow Dyke)

The information has been published by the Broads Authority in order to meet its duties as a harbour authority under the Port Marine Safety Code and the requirements of the UK Hydrographic Office. Last surveyed 2024.



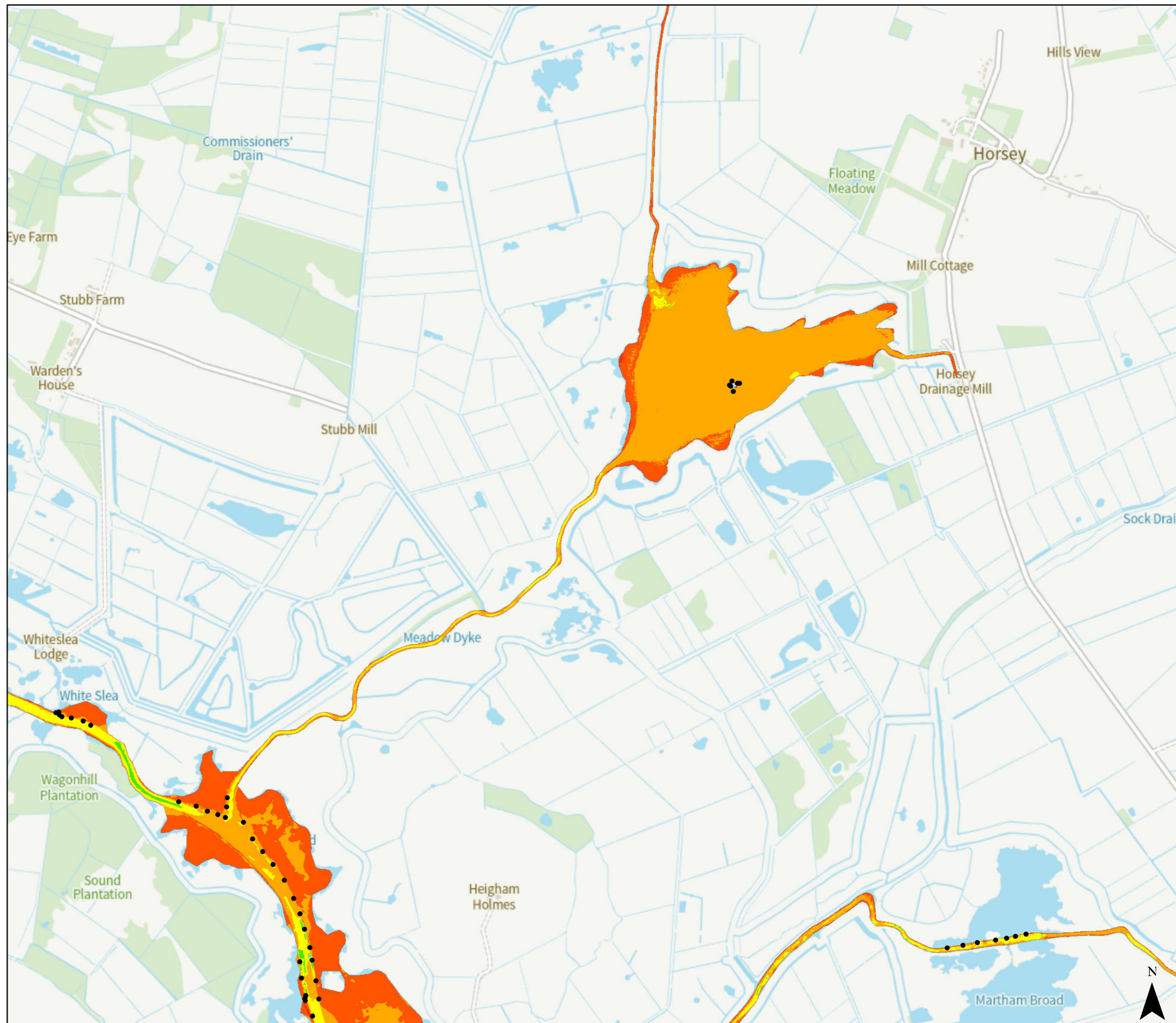
Depth below MLW (m)



● Post

© Crown copyright [and database rights] 2024 OS AC0000814754. You are permitted to use this data solely to enable you to respond to, or interact with, the organisation that provided you with the data. You are not permitted to copy, sub-licence, distribute or sell any of this data to third parties in any form.

0 0.7 Kilometers



Waxham Cut (Waxham New Cut)

The information has been published by the Broads Authority in order to meet its duties as a harbour authority under the Port Marine Safety Code and the requirements of the UK Hydrographic Office. Last surveyed 2024.



Depth below MLW (m)



© Crown copyright [and database rights] 2024 OS AC0000814754. You are permitted to use this data solely to enable you to respond to, or interact with, the organisation that provided you with the data. You are not permitted to copy, sub-licence, distribute or sell any of this data to third parties in any form.

0 0.6 Kilometers

